

# **SHIPWHEEL**

## **CATTLE COMPANY**



*10th Annual*  
**Bull Sale**

**DECEMBER 12, 2018 - 1 PM**

**Chinook, Montana**



## Shipwheel Cattle Co.

Klint & Lori Swanson

2265 Gooseberry Lane, Chinook, Montana 59523

(406) 357-2492 • (406) 357-2298 fax

Email: [shipwheelcattle@itstriangle.com](mailto:shipwheelcattle@itstriangle.com) • [www.ShipwheelCattle.com](http://www.ShipwheelCattle.com)

Hello and Welcome to Shipwheel Cattle Company

We are very excited with 2018 being our 10th anniversary sale. This is a milestone we are very proud of even though our family has been raising black angus cattle for nearly 80 years. Several generations of our family have led us to this point and we look forward to many more generations to lead us into the future. Our success is driven by you, our customer, and that is not taken for granted.

This is without a doubt, the best set of bulls from start to finish, that we have had the opportunity to offer. Impressive sons again this year by Resource, Chisum 255, Keystone, Montana, Signature 4541 and Uncommon. Some exciting new groups are from Renown, Recharge, Paycheck and Strategy. Selling again this year will be fancy sets of bred heifers and the dispersion of our 2008 model cows. See page for details.

Every bull selling was bred, born and raised on our outfit. WE develop them slowly at home, constantly evaluating. If there is a stumble somewhere along the line, we see it. This better allows us to only offer the top 50% of the calf crop. Our goal is to provide you with bulls that keep you profitable. If for whatever reason they don't, we want to know about it and make it right. We require our cattle to be balanced and excel at every trait in our extreme northern climate. Hoof structure, longevity, udder quality, fertility, mothering ability, temperament and carcass traits are important to us. Having the privilege to serve as your seedstock provider is not taken lightly here. We know that these genetics will impact your operation for many generations. Again, this year, we have tested every bull for genomic and parentage verification. HD50K is one of the latest tools available today. Thanks again for your support and consideration. Hope to see you sale Day.

Klint, Lori, Austin & Bree Swanson



*Bree, Klint, Lori & Austin Swanson*

Check us out at:

[www.ShipwheelCattle.com](http://www.ShipwheelCattle.com)



© AnnieOPhotos



# 10TH ANNUAL BULL SALE

## WEDNESDAY DECEMBER 12, 2018

Lunch at noon • Sale 1:00 P.M.

At the Clear Creek Ranch,  
South of Chinook, MT

### Selling:

**100 - Coming 2 Year Old Bulls • 120 - Bred Heifers • 30 - 2008 Cows**

### Sale Location:

Shipwheel Cattle Co. South of Chinook: On Hwy 2 in Chinook, turn at the Bear Paw Motel. Head south approx 1 mile to the corner of Route 529 and turn right on to Clear Creek Road. Continue South 11-1/2 miles to Gooseberry Lane and turn right. Go west 2 miles to Shipwheel Cattle Co. barn in the main yard.

### Inspection:

Bulls are available anytime at the ranch Chinook, MT.

### Sale Order:

- Bulls in catalog order
- Bred Heifers
- Bred Cows

### Auctioneer:



**Kyle Shobe,  
Lewistown MT**

**Cell Phone:  
(406)366-0472**

### Special Representatives:

Bill Pelton ..... Bill Pelton Livestock  
 Kurt Kangas ..... American Angus Regional Manager  
 John Goggins ..... Western Ag Reporter  
 Bo Bevis ..... Northern Livestock Video Auction  
 Gary Buffington ..... Northern Livestock Video Auction  
 Devin Murnin ..... Western Livestock Journal  
 Curt Cox ..... Wyoming Livestock Roundup

### Sale Day Phone:

**(406) 357-2492 (Office)**  
**(406)-399-2962 (Klint's cell)**  
**(406) 945-4180 (Lori's cell)**

### Trucking:

Free Delivery on bulls up to 1000 miles on purchases totaling \$3,500 or more. Delivery beyond, at cost. Delivery arrangement will be made on females at buyers expense. \$100 discount per bull if picked up within 1 week.

### Volume Discount:

2% on 2 bulls, 5% on 5 up to 10% on 10 bulls.

### First Year Breeding Guarantee:

We offer a first breeding season guarantee for any injury that would keep a bull from breeding. If a problem occurs, we will give you a suitable replacement or you will receive full credit, minus the salvage value of the original bull. Insurance is also available. See page 41.

### Sight Unseen Buying:

If you are unable to attend the sale, and would like to purchase, please give us a call. We will be glad to help you with your order. We guarantee 100% satisfaction on all orders.

### Herd Health:

Our herd health, semen, scrotal evaluation and ultrasound pregnancy testing is performed by Chinook Vet Clinic; Dr. Bob Schmitt, DVM and Dr. Lane Schmitt, DVM. All bulls selling that Shipwheel has used for natural service have tested negative for trichomoniasis. Every bull has tested negative for BVD.

### Wintering:

Wintering arrangements are available for \$250 per head until April 1, 2019.

### Retained Interest:

Shipwheel Cattle Co. is retaining one-third (1/3) revenue sharing semen interest in every bull selling.

### Terms & Conditions:

All cattle sell under the standard terms and conditions of the American Angus Association. Announcements sale day will take precedence over info in the catalog. Payment must be made day of sale, unless other prior arrangements are made.

### Liability:

All persons who attend the sale do so at their own risk, Shipwheel Cattle Co assumes no liability, legal or otherwise, for any accidents which may occur.



### LIVE ON THE INTERNET

See page 41 for details



# REFERENCE SIRES

## S A V RESOURCE 1441



**5 Sons Sell**

## S A V RESOURCE 1441

Reg: #+\*17016597

R R Rito 707 #  
**Rito 707 of Ideal 3407 7075**  
 Ideal 3407 of 1418 076

S A V 8180 Traveler 004  
**S A V Blackcap May 4136**  
 S A V May 2397

Rito N Bar  
 Eriskay of Rollin Rock 3  
 Ideal 1418 of 8103 4286 #  
 Ideal 076 of 692 8375

Sitz Traveler 8180 #  
 Boyd Forever Lady 8003  
 S A F 598 Bando 5175 #  
 S A V May 7238

<b>CED</b>	<b>1</b>
<b>BW</b>	<b>4.1</b>
<b>WW</b>	<b>71</b>
<b>YW</b>	<b>135</b>
<b>MILK</b>	<b>18</b>
<b>SC</b>	<b>1.19</b>
<b>CW</b>	<b>65</b>
<b>MB</b>	<b>.01</b>
<b>RE</b>	<b>1.15</b>
<b>FAT</b>	<b>.012</b>

Resource continues to impress us each year with his ability to sire a moderate frame with added muscle & stoutness. His first round of females raised some of the very top bulls in this sale. We will be offering several more Resource sons in our 2019 sale.

## S A V RENOWN 3439



**5 Sons Sell**

## S A V RENOWN 3439

Reg: +\*17633839

R R Rito 707 #  
**Rito 707 of Ideal 3407 7075**  
 Ideal 3407 of 1418 076

S A V 8180 Traveler 004  
**S A V Blackcap May 4136**  
 S A V May 2397

Rito N Bar  
 Eriskay of Rollin Rock 3  
 Ideal 1418 of 8103 4286 #  
 Ideal 076 of 692 8375

Sitz Traveler 8180 #  
 Boyd Forever Lady 8003  
 S A F 598 Bando 5175 #  
 S A V May 7238

<b>CED</b>	<b>0</b>
<b>BW</b>	<b>2.8</b>
<b>WW</b>	<b>72</b>
<b>YW</b>	<b>127</b>
<b>MILK</b>	<b>22</b>
<b>SC</b>	<b>.51</b>
<b>CW</b>	<b>50</b>
<b>MB</b>	<b>-.03</b>
<b>RE</b>	<b>.88</b>
<b>FAT</b>	<b>.019</b>

Renown is a full brother to Resource and Recharge. He sires superior muscle shape and design. His daughters are beautiful.

## S A V RECHARGE 3436



**4 Sons Sell**

## S A V RECHARGE 3436

Reg: +\*17633838

R R Rito 707 #  
**Rito 707 of Ideal 3407 7075**  
 Ideal 3407 of 1418 076

S A V 8180 Traveler 004  
**S A V Blackcap May 4136**  
 S A V May 2397

Rito N Bar  
 Eriskay of Rollin Rock 3  
 Ideal 1418 of 8103 4286 #  
 Ideal 076 of 692 8375

Sitz Traveler 8180 #  
 Boyd Forever Lady 8003  
 S A F 598 Bando 5175 #  
 S A V May 7238

<b>CED</b>	<b>3</b>
<b>BW</b>	<b>2.6</b>
<b>WW</b>	<b>67</b>
<b>YW</b>	<b>125</b>
<b>MILK</b>	<b>23</b>
<b>SC</b>	<b>1.39</b>
<b>CW</b>	<b>56</b>
<b>MB</b>	<b>-.14</b>
<b>RE</b>	<b>.83</b>
<b>FAT</b>	<b>-.041</b>

Recharge is a full brother to Resource and Renown. His progeny are docile and wide based with good feet. They exhibit very good length and muscle expression.



# REFERENCE SIRES



**S CHISUM 255**

**10 Sons Sell**

**S CHISUM 255**

Reg: \*17298481

- S Alliance 3313
- S Chisum 6175**
- S Gloria 464 #

- Shipwheel Chinook #
- S Blossom 0278 #**
- S Blossom 8378 #

- Paws Up Alliance 9561
- Paws Up 9048 Emulation Ext
- S Eclipse 169
- S Gloria 209 #
- H A Image Maker 0415 #
- Apex Eriskay 5506 #
- R&S Expedition 1404 #
- S Blossom 4190 #

<b>CED</b>	<b>10</b>
<b>BW</b>	<b>-.4</b>
<b>WW</b>	<b>59</b>
<b>YW</b>	<b>89</b>
<b>MILK</b>	<b>26</b>
<b>SC</b>	<b>.89</b>
<b>CW</b>	<b>34</b>
<b>MB</b>	<b>.28</b>
<b>RE</b>	<b>.58</b>
<b>FAT</b>	<b>.028</b>

255 was the high selling bull from Spickler's in North Dakota in 2013. He is an attractive, excellent footed, expressively muscled, herd sire that has proven himself to be an outstanding breeding bull. 255 sires a little less frame and more calving ease than the old Chisum bull. The dam of 255 is an excellent uddered Chinook daughter that descends from a long line of productive cows.

*Owned with J.C. Heiken & Sons Angus, MT, Spickler Ranch, ND.*



**MEYERS KEYSTONE M263**

**17 Sons Sell**

**MYERS KEYSTONE M263**

Reg:\*17717533

- S A V Final Answer 0035 #
- Connealy Capitalist 028**
- Prides Pita of Conanga 8821

- Hoover Dam #
- Myers Queen M180**
- Myers Proud Queen M363

- Sitz Traveler 8180 #
- S A V Emulous 8145**
- C R A Bextor 872 5205 608 #
- Prides Trav of Conanga 6499
- SydGen C C & 7 #
- Erica of Ellston C124 #
- Hyline Right Time 338 #
- Myers Traveling Queen M212

<b>CED</b>	<b>10</b>
<b>BW</b>	<b>.4</b>
<b>WW</b>	<b>63</b>
<b>YW</b>	<b>104</b>
<b>MILK</b>	<b>13</b>
<b>SC</b>	<b>1.18</b>
<b>CW</b>	<b>46</b>
<b>MB</b>	<b>.49</b>
<b>RE</b>	<b>.78</b>
<b>FAT</b>	<b>.010</b>

We are very pleased with the set of Keystone sons this year. They are consistently good footed & gentle with an attractive phenotype. His first set of daughters are tidy uddered with small teats and are doing a fine job.

*Owned with Myers Angus Farm, KY.*



**Shipwheel Montana**

**4 Sons Sell**

**SHIPWHEEL MONTANA 2600**

Reg: \*17524723

- S Alliance 3313
- S Chisum 6175 #**
- S Gloria 464 #s

- Apex Wide Track 374
- Dr J Ms Wide Track 374 M15**
- DR J Miss Guru I6

- Paws Up Alliance 9561
- Paws Up 9048 Emulation Ext
- S Eclipse 169
- S Gloria 209 #
- APEX Wide Track 450
- Apexette 6662 Bell 5051 #
- Master Guru 0641
- DR J Miss Trav 722 B17

<b>CED</b>	<b>-3</b>
<b>BW</b>	<b>5.6</b>
<b>WW</b>	<b>75</b>
<b>YW</b>	<b>132</b>
<b>MILK</b>	<b>20</b>
<b>SC</b>	<b>2.54</b>
<b>CW</b>	<b>73</b>
<b>MB</b>	<b>.47</b>
<b>RE</b>	<b>.48</b>
<b>FAT</b>	<b>.018</b>

Montana was the \$30,000 high selling bull from our 2013 sale. He is a high-performance sire that will inject added carcass weights, large scrotal circumference and increased heifer pregnancies. His progeny are gentle and have excellent hair coats for our extreme northern winters. His first round of daughters have raised some feature bulls in this sale.

*Owned with TC Ranch, NE.*



# REFERENCE SIRES

## SHIPWHEEL SIGNATURE 4541



**10 Sons Sell**

## SHIPWHEEL SIGNATURE 4541

Reg: \*18110618

Kesslers Frontman R001 #  
**Boyd Signature 1014**  
Boyd Erica Dianna 9054

Connealy Right Answer 746 #  
**Shipwheel Black Pride 277**  
Shipwheel Black Pride 0146

Connealy Front Page 0228 #  
Kesslers Bell 0024  
Boyd Next Day 6010  
Boyd Erica Dianna 606  
S A V Final Answer 0035 #  
Happy Dell of Conanga 262  
Sitz Rainmaker 6536  
DR J Miss Apex I61

<b>CED</b>	<b>4</b>
<b>BW</b>	<b>1.3</b>
<b>WW</b>	<b>56</b>
<b>YW</b>	<b>103</b>
<b>MILK</b>	<b>26</b>
<b>SC</b>	<b>-.35</b>
<b>CW</b>	<b>38</b>
<b>MB</b>	<b>-.19</b>
<b>RE</b>	<b>.63</b>
<b>FAT</b>	<b>.010</b>

4541 was the top selling bull in our 2015 production sale. He was truly a standout at every point as a young bull and continues to be. This gentle, excellent footed bull is loaded with muscle expression and style. His excellent uddered dam raised him as her first calf. He has proven to be a very aggressive breeding bull. We are very pleased with this second group of sons. His first round of daughters are fancy with excellent udders and look to be productive. **Owned with MY Angus and Schmitt Angus. Semen available.**

## PYRAMID STRATEGY 4086



**3 Sons Sell**

## PYRAMID STRATEGY 4086

Reg: +\*18229393

Rito 707 of Ideal 3407 7075  
**S A V Resource 1441 #**  
S A V Blackcap May 4136

Glacial 7078 VRD 20N  
**Glacial 20N BlackbirdEve 29R**  
Glacial Blackbird Eve 33M

R R Rito 707 #  
Ideal 3407 of 1418 076  
S A V 8180 Traveler 004 #  
S A V May 2397 #  
Vermilion Dateline 7078 #  
K N M Enchantress 005  
BT Traveler 228K #  
R B Blackbird Eve 813

<b>CED</b>	<b>0</b>
<b>BW</b>	<b>2.6</b>
<b>WW</b>	<b>56</b>
<b>YW</b>	<b>101</b>
<b>MILK</b>	<b>20</b>
<b>SC</b>	<b>.49</b>
<b>CW</b>	<b>34</b>
<b>MB</b>	<b>.09</b>
<b>RE</b>	<b>1.08</b>
<b>FAT</b>	<b>.001</b>

Strategy was our top selling selection from the Pyramid Beef sale in South Dakota. He was a standout Resource ET son from the best cow family on their ranch. His ten year old dam and thirteen year old grand dam were both serving as donors. He is a big rib eyed, expressively muscled bull with more front extension than his sire. Only a few sons this year but they are impressive. Look for many more in years to come. **Owned with Frederickson Ranch, SD. Semen available.**

## BASIN PAYCHECK 5249



**13 Sons Sell**

## BASIN PAYCHECK 5249

Reg: \*18184147

Basin Payweight 006S #  
**Basin Payweight 1682**  
21AR O Lass 7017

Basin Rainmaker P175 #  
**Basin Lucy 3150**  
Basin Lucy 1667

Vermilion Payweight J847 #  
Basin Lucy 3829  
HARB Pendleton 765 J H #  
21AR O Lass F24A  
Basin Rainmaker 747L #  
Basin Blackcap Lady 693L  
Hoover Dam #  
Basin Lucy W213

<b>CED</b>	<b>7</b>
<b>BW</b>	<b>1.5</b>
<b>WW</b>	<b>66</b>
<b>YW</b>	<b>122</b>
<b>MILK</b>	<b>27</b>
<b>SC</b>	<b>.48</b>
<b>CW</b>	<b>46</b>
<b>MB</b>	<b>1.18</b>
<b>RE</b>	<b>.30</b>
<b>FAT</b>	<b>.053</b>

We chose to use Paycheck primarily for an outcross to most of our cow herd and the maternal power behind him. He also injects added marbling and excellent dispositions.

# EXPLANATION OF CALVING EASE SCORE DISPOSITION AND FOOT SCORES

This year we have decided to incorporate some more information on each lot to better help you in your bull selection. We realize that everyone has their own unique selection criteria, but we feel that this additional information is very important.

In the past, we have had a written explanation of disposition or foot quality on some of the bulls. These are traits that are very important to us. We pay very close attention to the foot quality of our herd and only use a bull that we feel will improve the hoof structure. We start from the ground up in our sire selection, researching deep into the cow family. We are focused on breeding an Angus cow that will stand the test of time in our extreme northern Montana climate. We just lost our main donor cow that was 17 years old. Foot quality has been severely overlooked in the chase for bigger numbers. No animal here is trimmed except for our horses. If there ever is a foot problem with a bull purchased from us, we make it right. Any bulls that showed signs of very poor hoof structure or disposition have been culled.

## CALVING EASE SCORE:

Also, we have had a calving ease recommendation written out on each bull. This year it is based on a 1, 2, or 3 rating.

- 1—Cow Bull
- 2—Large framed heifers or cows
- 3—All heifers or cows

## New scoring information:



## SHIPWHEEL RESOURCE 7580



Reg: 19227169 · Calved: 04/04/17

Rito 707 of Ideal 3407 7075	R R Rito 707 #
S A V Resource 1441 #	Ideal 3407 of 1418 076
S A V Blackcap May 4136	S A V 8180 Traveler 004 #
	S A V May 2397 #
Connealy Capitalist 028 #	S A V Final Answer 0035 #
Shipwheel Crissy 408	Prides Pita of Conanga 8821
Apexette Crissy 4425	Connealy Forefront #
	H C Miss Crissy 501

CED	
BW	
WW	
YW	
MILK	
SC	
CW	
MB	
RE	
FAT	

BW	205 WT	WR	YR	Scrotal	
Dam BR	Dam WR	Dam YR	MGD BR	MGD WR	MGD YR

Calving Ease Score:	1-3	Front Foot Score:	1-5
Disposition Score:	1-5	Hind Foot Score:	1-5



## DISPOSITION AND FOOT SCORES:

The scoring for the disposition and foot scores are based on a 1-5 rating. 1 being the very worst and 5 being the very best. We have spent a considerable amount of time around these guys by now and have a pretty darn good idea how to rank them.



Shipwheel Chinook

ABS

We would like to dedicate  
this sale to  
**Shipwheel Chinook 7700**  
**2007-2018**



# SHIPWHEEL RESOURCE 7580



Reg: 19227169 • Calved: 04/04/17

CED	6
BW	1.6
WW	62
YW	114
MILK	18
SC	0.21
CW	46
MB	.28
RE	.53
FAT	.039

Rito 707 of Ideal 3407 7075  
**S A V Resource 1441 #**  
 S A V Blackcap May 4136

R R Rito 707 #  
 Ideal 3407 of 1418 076  
 S A V 8180 Traveler 004 #  
 S A V May 2397 #  
 S A V Final Answer 0035 #  
 Prides Pita of Conanga 8821  
 Connealy Forefront #  
 H C Miss Crissy 501

Connealy Capitalist 028 #  
**Shipwheel Crissy 408**  
 Apexette Crissy 4425

BW	205 WT	WR	YR	Scrotal	RE
77	639	100	101	37	FAT
Dam BR	Dam WR	Dam YR	MGD BR	MGD WR	MGD YR
2/93	2/104	2/104	10/95	10/98	9/100

Calving Ease Score: 2      Front Foot Score: 4.5  
 Disposition Score: 4      Hind Foot Score: 4.5

- Long sided, with a good stride & excellent feet.
- Full brother in blood to Lot 2.
- Dam is a small teated, nice young cow on her way to pathfinder.
- Granddam was a very influential donor for us and raised calves until she was 13.



# SHIPWHEEL RESOURCE 7557



Reg: 19227167 • Calved: 04/08/17

CED	5
BW	2.7
WW	63
YW	121
MILK	13
SC	0.36
CW	43
MB	.26
RE	.70
FAT	-.008

Rito 707 of Ideal 3407 7075  
**S A V Resource 1441 #**  
 S A V Blackcap May 4136

R R Rito 707 #  
 Ideal 3407 of 1418 076  
 S A V 8180 Traveler 004 #  
 S A V May 2397 #  
 S A V Final Answer 0035 #  
 Prides Pita of Conanga 8821  
 Connealy Forefront #  
 H C Miss Crissy 501

Connealy Capitalist 028 #  
**Shipwheel Crissy 402**  
 Apexette Crissy 4425

BW	205 WT	WR	YR	Scrotal	RE
80	641	101	110	37	FAT
Dam BR	Dam WR	Dam YR	MGD BR	MGD WR	MGD YR
2/102	2/100	2/106	10/95	10/98	9/100

Calving Ease Score: 1      Front Foot Score: 4  
 Disposition Score: 4.5      Hind Foot Score: 4.5

- Wide based, deep & soggy. Full brother in blood to Lot 1.
- Dam is an excellent uddered, broody young cow.



S A V Resource 1441 - Sire





# SHIPWHEEL KEYSTONE 7607



Reg: 19223566 • Calved: 03/20/17

Connealy Capitalist 028 #  
Myers Keystone M263  
Myers Queen M180

S A V Final Answer 0035 #  
Prides Pita of Conanga 8821  
Hoover Dam #  
Myers Proud Queen M363  
Rito 707 of Ideal 3407 7075  
S A V Blackcap May 4136  
Apex Focus 053  
DR J Miss Time C72

CED	5
BW	2.1
WW	66
YW	117
MILK	12
SC	0.89
CW	55
MB	.15
RE	.97
FAT	.020

BW	205 WT	WR	YR	Scrotal	RE
80	643	101	103	37	
Dam BR	Dam WR	Dam YR	MGD BR	MGD WR	MGD YR
1/105	1/101	1/103	8/104	8/108	8/105

Calving Ease Score: 1      Front Foot Score: 4.5  
Disposition Score: 5      Hind Foot Score: 4.5

- Wide based with a big foot, gentle & thick.
- Dam is a smaller framed, deep middled, first calf heifer.



AnnieOPhotos



# SHIPWHEEL CHISUM 7601



Reg: 19223582 • Calved: 03/15/17

S Chisum 6175 #  
S Chisum 255  
S Blossom 0278 #

S Alliance 3313  
S Gloria 464 #  
Shipwheel Chinook #  
S Blossom 8378 #

S A V Resource 1441 #  
Shipwheel Enchantress 574  
Shipwheel Enchantress 018

Rito 707 of Ideal 3407 7075  
S A V Blackcap May 4136  
S A V Pioneer 7301 #  
Shipwheel Enchantress 880

CED	9
BW	1.6
WW	66
YW	110
MILK	22
SC	0.59
CW	51
MB	.22
RE	.55
FAT	.053

BW	205 WT	WR	YR	Scrotal	RE
81	691	108	103	38	
Dam BR	Dam WR	Dam YR	MGD BR	MGD WR	MGD YR
1/106	1/108	1/103	6/105	6/103	5/104

Calving Ease Score: 3      Front Foot Score: 4  
Disposition Score: 5      Hind Foot Score: 4

- The best 255 we have raised.
- He is a mild-mannered, attractive bull that tracks wide with good feet, muscling & depth of body. We would like to use him back in our program.
- Dam is a nice uddered, long bodied, feminine first calf heifer. She bred back A.I. for her second with a Keystone heifer calf.



S Chisum 255 - Sire



AnnieOPhotos



# SHIPWHEEL PAYCHECK 7570



Reg: 19230123 • Calved: 04/04/17

CED	5
BW	4.1
WW	79
YW	144
MILK	25
SC	1.34
CW	70
MB	.69
RE	.61
FAT	.033

Basin Payweight 1682  
**Basin Paycheck 5249**  
 Basin Lucy 3150

Basin Payweight 006S #  
 21AR O Lass 7017  
 Basin Rainmaker P175 #  
 Basin Lucy 1667  
 S Alliance 3313  
 S Gloria 464 #  
 S A V Pioneer 7301 #  
 Shipwheel Eriskay 821

S Chisum 6175 #  
**Shipwheel Eriskay 330 #**  
 Shipwheel Eriskay 034

BW	205 WT	WR	YR	Scrotal	RE
86	699	110	111	42	.033
Dam BR	Dam WR	Dam YR	MGD BR	MGD WR	MGD YR
3/108	3/107	3/108	2/96	2/106	1/109

Calving Ease Score: 1      Front Foot Score: 4  
 Disposition Score: 5      Hind Foot Score: 4.5

- A standout of a bull since day one. He carries boatloads of natural muscle on a moderate frame and a good foot.
- Dam is an elegant young cow from our most influential cow family. She made pathfinder status with Lot 5. A top selling son sold in 2016 to Schwenke Ranch, MT. She is on the right track to entering the donor pen.
- Great Grand dam was one of the favorite cows on display at our tour stop this fall
- 7th cow back was Klint's first registered cow.
- This is Austin's bull.



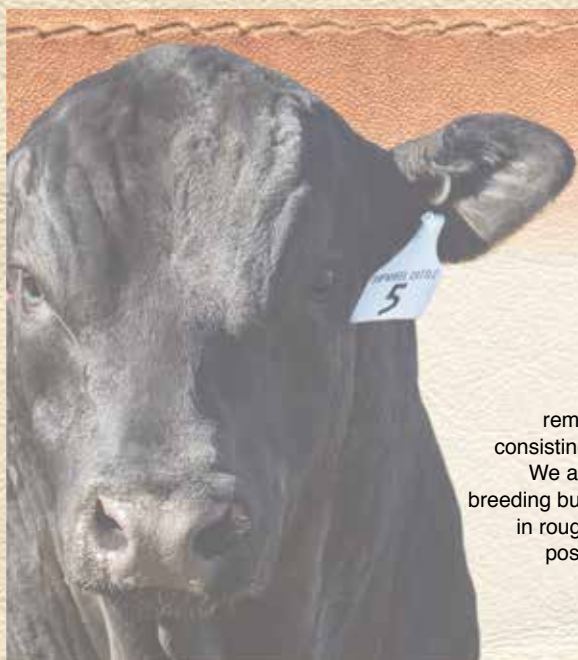
AnnieOPhotos



AnnieOPhotos



Basin Paycheck 5249 - Sire



## BULL DEVELOPMENT AT SHIPWHEEL CATTLE CO.

Prior to calving, our cows are expected to graze winter pasture with only SweetPro blocks, usually well into February before seeing any hay. Our cows are range calved in April and May while only being checked twice a day. The pairs summer primarily in some of our higher, rougher pastures with the calves never seeing any creep feed. A full round of shots are given at our June/July brandings as well as preconditioning in September/October. The calves are then fence line weaned in early November on our hay meadows and SweetPro blocks. After grazing for 30 days, the bulls are then hauled into our grow yard, where they remain until May. While in the grow yard, a 2.5 to 3 lb. gain is targeted with a roughage based diet consisting of grass/alfalfa hay, silage, a mix of oats, peas, corn and a customized vitamin mineral pack. We are constantly evaluating them and enjoy watching them slowly progress into structurally sound breeding bulls. The bulls are then hauled to summer pasture where they are expected to travel and thrive in rough terrain. In September, the bulls are brought back into the grow yard and fed a similar diet to post weaning. The manner in which we develop our bulls enables them to express their genetics. The bulls are broke to horses, dogs and a hot wire. A huge thank you goes out to Ron Amidon for the countless hours spent on our rations. His knowledge and experience is very valuable to our program.



### SHIPWHEEL PAYCHECK 7524



Reg: 19227168 • Calved: 04/07/17

Basin Payweight 1682  
Basin Paycheck 5249  
Basin Lucy 3150

Basin Payweight 006S #  
21AR O Lass 7017  
Basin Rainmaker P175 #  
Basin Lucy 1667  
S Alliance 3313  
S Gloria 464 #  
Connealy Forefront #  
H C Miss Crissy 501

CED	9
BW	1.0
WW	62
YW	110
MILK	22
SC	0.59
CW	41
MB	.80

S Chisum 6175 #  
Shipwheel Crissy 407  
Apexette Crissy 4425

BW	205 WT	WR	YR	Scrotal	RE	.55
72	638	100	106	37.5	FAT	.015
Dam BR	Dam WR	Dam YR	MGD BR	MGD WR	MGD YR	
2/93	2/90	1/106	10/95	10/98	9/100	

Calving Ease Score: 3      Front Foot Score: 3.5  
Disposition Score: 5      Hind Foot Score: 4

- A kind bull that covers all the bases.
- Dam is a nice young cow that has bred first cycle every year. Several ET brothers were highlights of our 2015 Sale. Her first calf was injured, thus the lower ratio's. Full brother in blood to Lot 21.
- Grand dam was a very influential donor cow for us.



### SHIPWHEEL RESOURCE 7534



Reg: 19223556 • Calved: 04/06/17

Rito 707 of Ideal 3407 7075  
S A V Resource 1441 #  
S A V Blackcap May 4136

R R Rito 707 #  
Ideal 3407 of 1418 076  
S A V 8180 Traveler 004 #  
S A V May 2397 #  
Sitz Far & Wide 6908  
DR J Ms Apex Focus 053 M85  
PGC Alliance 187- 9045  
Shipwheel Eola 938

CED	5
BW	1.3
WW	50
YW	90
MILK	27
SC	1.21
CW	47
MB	.19

Shipwheel Far & Wide 1558  
Shipwheel Eola 310 #  
Shipwheel Eola 179

BW	205 WT	WR	YR	Scrotal	RE	.62
87	642	101	105	38	FAT	.024
Dam BR	Dam WR	Dam YR	MGD BR	MGD WR	MGD YR	
3/107	3/107	3/108	2/95	2/99	2/98	

Calving Ease Score: 1      Front Foot Score: 4.5  
Disposition Score: 5      Hind Foot Score: 4.5

- A super gentle, long sided, moderate framed Resource with excellent feet.
- Dam is a small teated, very gentle, productive young cow. She made pathfinder status with Lot 7 and has a full brother to him for next years sale.



### SHIPWHEEL PAYCHECK 7539



Reg: 19227172 • Calved: 03/28/17

Basin Payweight 1682  
Basin Paycheck 5249  
Basin Lucy 3150

Basin Payweight 006S #  
21AR O Lass 7017  
Basin Rainmaker P175 #  
Basin Lucy 1667  
S Chisum 6175 #  
S Blossom 0278 #  
Sitz Far & Wide 6908  
Apexette Chloe 4099 #

CED	13
BW	.2
WW	69
YW	118
MILK	21
SC	1.07
CW	42
MB	.48

S Chisum 255  
Shipwheel Chloe 455  
Shipwheel Chloe 263 #

BW	205 WT	WR	YR	Scrotal	RE	.44
67	681	107	106	40	FAT	.047
Dam BR	Dam WR	Dam YR	MGD BR	MGD WR	MGD YR	
2/85	2/107	2/106	4/98	4/104	4/103	

Calving Ease Score: 3      Front Foot Score: 2.5  
Disposition Score: 4.5      Hind Foot Score: 3.5

- Excellent phenotype to this gentle bull.
- Dam is a good looking, perfect uddered, small teated young cow on her way to pathfinder. She bred back A.I. with a Torque bull calf.
- Grand dam and Great Grand dam are pathfinders.





**SHIPWHEEL IDEAL 4223 7571**

Reg: 19241519 • Calved: 03/16/17

Ideal 1168 of 9814 Lady  
**Ideal 4223 of 1168 Blkbrd**  
 Ideal 2441 of 9524 Blkbrd  
 Shipwheel Montana 2600  
**Shipwheel Lady 569**  
 Shipwheel Lady 009

Ideal 9814 of 6832 7607  
 Ideal 9011 of R Int 8155  
 Ideal 9524 of 5570 6809 #  
 Ideal 7259 of 3542 0421  
 S Chisum 6175 #  
 Dr J Ms Wide Track 374 M15  
 S A V Pioneer 7301 #  
 Shipwheel Lady 866



<b>CED</b>	<b>5</b>
<b>BW</b>	<b>1.4</b>
<b>WW</b>	<b>67</b>
<b>YW</b>	<b>118</b>
<b>MILK</b>	<b>27</b>
<b>SC</b>	<b>1.44</b>
<b>CW</b>	<b>52</b>
<b>MB</b>	<b>.47</b>
<b>RE</b>	<b>.36</b>
<b>FAT</b>	<b>.024</b>

<b>BW</b>	<b>205 WT</b>	<b>WR</b>	<b>YR</b>	<b>Scrotal</b>
72	678	106	108	37.5

<b>Dam BR</b>	<b>Dam WR</b>	<b>Dam YR</b>	<b>MGD BR</b>	<b>MGD WR</b>	<b>MGD YR</b>
1/95	1/106	1/108	6/99	6/102	6/102

Calving Ease Score: 2      Disposition Score: 4.5      Front Foot Score: 4      Hind Foot Score: 3

- A moderate framed, deep bodied, outcross, calving ease bull. He has been a standout since he hit the ground.
- We have used this bull for natural service.
- Dam is a medium framed, fancy, first calf heifer with and excellent udder.
- Sire is owned by Ron VanDyke & MR Angus. We have used him extensively - primarily on our Jorgensen heifers for 3 years with great success.



**SHIPWHEEL BLS KEYSTONE 7550**

Reg: 19226465 • Calved: 03/27/17

Connealy Capitalist 028 #  
**Myers Keystone M263**  
 Myers Queen M180  
 Shipwheel Montana 2600  
**Shipwheel BLS Rachel 510**  
 Apexette Rachel 2011

S A V Final Answer 0035 #  
 Prides Pita of Conanga 8821  
 Hoover Dam #  
 Myers Proud Queen M363  
 S Chisum 6175 #  
 Dr J Ms Wide Track 374 M15  
 Connealy Thunder #  
 Apexette Rachel 0048





<b>CED</b>	<b>10</b>
<b>BW</b>	<b>1.0</b>
<b>WW</b>	<b>70</b>
<b>YW</b>	<b>116</b>
<b>MILK</b>	<b>20</b>
<b>SC</b>	<b>2.52</b>
<b>CW</b>	<b>58</b>
<b>MB</b>	<b>.80</b>
<b>RE</b>	<b>.58</b>
<b>FAT</b>	<b>.035</b>

<b>BW</b>	<b>205 WT</b>	<b>WR</b>	<b>YR</b>	<b>Scrotal</b>
73	711	112	110	46

<b>Dam BR</b>	<b>Dam WR</b>	<b>Dam YR</b>	<b>MGD BR</b>	<b>MGD WR</b>	<b>MGD YR</b>
1/96	1/112	1/110	4/97	4/102	4/107

Calving Ease Score: 2      Disposition Score: 4.5      Front Foot Score: 3.5      Hind Foot Score: 3

- This moderate framed Keystone has been a standout since he hit the ground. He is long, thick topped, big nitted and gentle. Look him up sale day.
- Dam is a bigger framed, good uddered, first calf heifer that bred back A.I for her second calf.
- Donor Grand dam is a model Angus cow that you will be seeing a lot more of in the future.
- This is Bree's bull Mr. Glitters

Producers for FUTURES  **10% of Lot 10 will be donated to the Montana FFA Foundation. These funds will be given back directly to students in the form of beef project grants.** 

Purchase your next herd sire while supporting Montana FFA and the future of the beef industry!



## SHIPWHEEL RENOWN 7505



Reg: +19227154 • Calved: 04/02/17

Rito 707 of Ideal 3407 7075  
S A V Renown 3439  
S A V Blackcap May 4136

R R Rito 707 #  
Ideal 3407 of 1418 076  
S A V 8180 Traveler 004 #  
S A V May 2397 #

B H Rolls Royce 944  
D R J Miss Rolls Royce F17 #  
DR J Miss N Bar 17

G D A R Rolls Royce 203 #  
G D A R Blackcap Lady 7225  
N Bar Emulation Ext Z1082  
R B Pinetop of 83

CED	5
BW	1.4
WW	48
YW	104
MILK	35
SC	1.56
CW	56
MB	.20
RE	.63
FAT	-.003

BW	205 WT	WR	YR	Scrotal	RE
83	576	100	100	42	FAT
Dam BR	Dam WR	Dam YR	MGD BR	MGD WR	MGD YR
12/102	12/106	10/104	11/101	11/102	9/104

Calving Ease Score: 1      Front Foot Score: 4  
Disposition Score: 4      Hind Foot Score: 4.5

- The first of many Renown sons to sell from one of the best cows to ever reside here. This embryo bull is moderate, thick and very dense. He will sire stout sons and fancy females with longevity.
- Dam was our main donor cow that we lost this year at 17 years of age. She had an excellent udder with small teats, perfect feet and outstanding disposition.
- Grand dam was also a great cow that produced into her teens.
- Maternal ET brother to Lots 37, 38 and 81.



## SHIPWHEEL RENOWN 7503



Reg: +19228813 • Calved: 04/03/17

Rito 707 of Ideal 3407 7075  
S A V Renown 3439  
S A V Blackcap May 4136

R R Rito 707 #  
Ideal 3407 of 1418 076  
S A V 8180 Traveler 004 #  
S A V May 2397 #

Connealy Danny Boy #  
DR J Ms Danny Boy M64 #  
DR J Miss Apex 053-K118

Connealy Timeline #  
Energy of Conanga 4851  
Apex Focus 053  
DR J Miss Time C102

CED	4
BW	1.4
WW	58
YW	102
MILK	14
SC	0.55
CW	33
MB	.31
RE	.70
FAT	.011

BW	205 WT	WR	YR	Scrotal	RE
97	615	100	100	36	FAT
Dam BR	Dam WR	Dam YR	MGD BR	MGD WR	MGD YR
6/94	6/108	5/106	2/96	2/97	2/100

Calving Ease Score: 1      Front Foot Score: 4.5  
Disposition Score: 4.5      Hind Foot Score: 4.5

- Another good embryo Renown son from a powerful cow.
- Dam was a very attractive, easy doing donor. She consistently raised a dandy.
- Maternal ET brother to Lots 12, 15, 16, 19 and 44.



## SHIPWHEEL CHISUM 7678



Reg: 19223554 • Calved: 03/16/17

S Chisum 6175 #  
S Chisum 255  
S Blossom 0278 #

S Alliance 3313  
S Gloria 464 #  
Shipwheel Chinook #  
S Blossom 8378 #

BPF 752 Freestyle 0111  
Shipwheel Eriskay 5115  
Shipwheel Eriskay 818

BPF Freestyle 752  
Miss Wix 6140 of BPF #  
Sitz Tradition 8135 #  
Apexette Eriskay 9040 #

CED	2
BW	3.7
WW	67
YW	110
MILK	23
SC	1.82
CW	44
MB	.35
RE	.29
FAT	.022

BW	205 WT	WR	YR	Scrotal	RE
87	693	109	105	39	FAT
Dam BR	Dam WR	Dam YR	MGD BR	MGD WR	MGD YR
1/113	1/109	1/105	8/105	8/108	7/107

Calving Ease Score: 1      Front Foot Score: 3.5  
Disposition Score: 4.5      Hind Foot Score: 4

- Has always been a standout. Moderate, thick and gentle.
- Dam is a feminine, very good uddered first calf heifer from a powerful cow family.
- 3rd and 4th dams, both donors.





### SHIPWHEEL CHISUM 7525



Reg: 19223555 • Calved: 03/06/17

S Chisum 6175 #  
**S Chisum 255**  
S Blossom 0278 #  
  
Connealy Packer 547 #  
**Shipwheel Eriskay 5128**  
Shipwheel Eriskay 955

S Alliance 3313  
S Gloria 464 #  
Shipwheel Chinook #  
S Blossom 8378 #  
  
Feltons Meat Packer 62 #  
Bestrelle of Conanga 539  
Schurrtop American 5846 #  
Apex Eriskay 5073

<b>CED</b>	<b>0</b>
<b>BW</b>	<b>2.3</b>
<b>WW</b>	<b>64</b>
<b>YW</b>	<b>101</b>
<b>MILK</b>	<b>27</b>
<b>SC</b>	<b>0.91</b>
<b>CW</b>	<b>41</b>
<b>MB</b>	<b>.26</b>
<b>RE</b>	<b>.61</b>
<b>FAT</b>	<b>.012</b>

<b>BW</b>	<b>205 WT</b>	<b>WR</b>	<b>YR</b>	<b>Scrotal</b>	
<b>77</b>	<b>660</b>	<b>104</b>	<b>99</b>	<b>39</b>	
<b>Dam BR</b>	<b>Dam WR</b>	<b>Dam YR</b>	<b>MGD BR</b>	<b>MGD WR</b>	<b>MGD YR</b>
<b>1/101</b>	<b>1/104</b>	<b>1/99</b>	<b>7/103</b>	<b>7/104</b>	<b>5/108</b>

Calving Ease Score: 1      Front Foot Score: 3  
Disposition Score: 4.5      Hind Foot Score: 4

- A well balanced, good looking 255 with nice thickness and length.
- Dam is a perfect uddered first calf heifer.



### SHIPWHEEL RECHARGE 7513



Reg: +19228768 • Calved: 03/31/17

Rito 707 of Ideal 3407 7075  
**S A V Recharge 3436**  
S A V Blackcap May 4136

R R Rito 707 #  
Ideal 3407 of 1418 076  
S A V 8180 Traveler 004 #  
S A V May 2397 #

Connealy Danny Boy #  
**DR J Ms Danny Boy M64 #**  
DR J Miss Apex 053-K118

Connealy Timeline #  
Energy of Conanga 4851  
Apex Focus 053  
DR J Miss Time C102

<b>CED</b>	<b>3</b>
<b>BW</b>	<b>2.1</b>
<b>WW</b>	<b>54</b>
<b>YW</b>	<b>98</b>
<b>MILK</b>	<b>28</b>
<b>SC</b>	<b>2.23</b>
<b>CW</b>	<b>40</b>
<b>MB</b>	<b>-.07</b>
<b>RE</b>	<b>.69</b>
<b>FAT</b>	<b>-.036</b>

<b>BW</b>	<b>205 WT</b>	<b>WR</b>	<b>YR</b>	<b>Scrotal</b>	
<b>89</b>	<b>624</b>	<b>100</b>	<b>100</b>	<b>42</b>	
<b>Dam BR</b>	<b>Dam WR</b>	<b>Dam YR</b>	<b>MGD BR</b>	<b>MGD WR</b>	<b>MGD YR</b>
<b>6/94</b>	<b>6/108</b>	<b>5/106</b>	<b>2/96</b>	<b>2/97</b>	<b>2/100</b>

Calving Ease Score: 1      Front Foot Score: 4.5  
Disposition Score: 5      Hind Foot Score: 4.5

- A dandy Recharge embryo bull. Moderate, thick and long with good feet.
- Full ET brother to Lots 16 and 19.
- Maternal ET brothers to Lots 12, 16, 19 and 44.



### SHIPWHEEL RECHARGE 7509



Reg: +19228767 • Calved: 03/30/17

Rito 707 of Ideal 3407 7075  
**S A V Recharge 3436**  
S A V Blackcap May 4136

R R Rito 707 #  
Ideal 3407 of 1418 076  
S A V 8180 Traveler 004 #  
S A V May 2397 #

Connealy Danny Boy #  
**DR J Ms Danny Boy M64 #**  
DR J Miss Apex 053-K118

Connealy Timeline #  
Energy of Conanga 4851  
Apex Focus 053  
DR J Miss Time C102

<b>CED</b>	<b>5</b>
<b>BW</b>	<b>3.0</b>
<b>WW</b>	<b>59</b>
<b>YW</b>	<b>103</b>
<b>MILK</b>	<b>22</b>
<b>SC</b>	<b>1.78</b>
<b>CW</b>	<b>36</b>
<b>MB</b>	<b>.14</b>
<b>RE</b>	<b>.55</b>
<b>FAT</b>	<b>-.019</b>

<b>BW</b>	<b>205 WT</b>	<b>WR</b>	<b>YR</b>	<b>Scrotal</b>	
<b>93</b>	<b>643</b>	<b>100</b>	<b>100</b>	<b>39</b>	
<b>Dam BR</b>	<b>Dam WR</b>	<b>Dam YR</b>	<b>MGD BR</b>	<b>MGD WR</b>	<b>MGD YR</b>
<b>6/94</b>	<b>6/108</b>	<b>5/106</b>	<b>2/96</b>	<b>2/97</b>	<b>2/100</b>

Calving Ease Score: 1      Front Foot Score: 4.5  
Disposition Score: 4.5      Hind Foot Score: 4.5

- Very similar to Lot 15.
- Full ET brother to Lots 15 and 19.
- Maternal ET brother to Lots 12, 15, 19 and 44.





### SHIPWHEEL SIGNATURE 7608



Reg: 19223550 • Calved: 03/23/17

Boyd Signature 1014  
Shipwheel Signature 4541  
Shipwheel Black Pride 277

Kesslers Frontman R001 #  
Boyd Erica Dianna 9054  
Connealy Right Answer 746 #  
Shipwheel Black Pride 0146  
Shipwheel Upward 2517  
Sitz Upward 307R #  
Shipwheel Enchantress 8184  
S John Wayne  
Shipwheel Chloe 958

CED	1
BW	1.5
WW	67
YW	105
MILK	20
SC	0.79
CW	56
MB	.07

BW	205 WT	WR	YR	Scrotal	RE	FAT
72	690	108	100	38		.008
Dam BR	Dam WR	Dam YR	MGD BR	MGD WR	MGD YR	
1/95	1/108	1/100	3/107	3/101	2/104	

Calving Ease Score: 1      Front Foot Score: 4  
Disposition Score: 4.5      Hind Foot Score: 4

- Thick top and quarter.
- Dam is a long bodied nice uddered first calf heifer.



### SHIPWHEEL PAYCHECK 7589



Reg: 19227157 • Calved: 04/07/17

Basin Payweight 1682  
Basin Paycheck 5249  
Basin Lucy 3150

Basin Payweight 006S #  
21AR O Lass 7017  
Basin Rainmaker P175 #  
Basin Lucy 1667  
Shipwheel Chinook #  
Apexette Crissy 4425  
Sitz Far & Wide 6908  
DR J Miss ND 878-J61 #

CED	6
BW	1.4
WW	66
YW	118
MILK	22
SC	0.61
CW	40
MB	.98

BW	205 WT	WR	YR	Scrotal	RE	FAT
90	662	104	100	38		.047
Dam BR	Dam WR	Dam YR	MGD BR	MGD WR	MGD YR	
2/108	2/98	1/100	5/104	5/99	3/106	

Calving Ease Score: 2      Front Foot Score: 3  
Disposition Score: 4.5      Hind Foot Score: 4

- Extra marbling in this deep ribbed bull.
- Dam is a perfect uddered, easy keeping, gentle young cow.



### SHIPWHEEL PAYCHECK 7554



Reg: 19227162 • Calved: 04/06/17

Basin Payweight 1682  
Basin Paycheck 5249  
Basin Lucy 3150

Basin Payweight 006S #  
21AR O Lass 7017  
Basin Rainmaker P175 #  
Basin Lucy 1667  
S A V Pioneer 7301 #  
S A V Final Answer 0035 #  
S A V Blackbird 5297  
H A Image Maker 0415 #  
DR J Miss D J H 019 B93

CED	3
BW	3.0
WW	66
YW	110
MILK	18
SC	1.03
CW	46
MB	.64

BW	205 WT	WR	YR	Scrotal	RE	FAT
88	700	110	110	39.5		.043
Dam BR	Dam WR	Dam YR	MGD BR	MGD WR	MGD YR	
4/115	4/113	4/111	7/103	7/105	6/101	

Calving Ease Score: 1      Front Foot Score: 4.5  
Disposition Score: 4.5      Hind Foot Score: 4

- A little more frame and performance to this dandy cow bull.
- Pathfinder dam is a pretty, long bodied, free moving cow.



### SHIPWHEEL RECHARGE 7508



Reg: +19228770 • Calved: 03/28/17

Rito 707 of Ideal 3407 7075  
S A V Recharge 3436  
S A V Blackcap May 4136

R R Rito 707 #  
Ideal 3407 of 1418 076  
S A V 8180 Traveler 004 #  
S A V May 2397 #  
Connealy Timeline #  
Energy of Conanga 4851  
Apex Focus 053  
DR J Miss Time C102

CED	7
BW	1.5
WW	61
YW	114
MILK	32
SC	2.14
CW	52
MB	.30

BW	205 WT	WR	YR	Scrotal	RE	FAT
76	643	100	100	42		-.038
Dam BR	Dam WR	Dam YR	MGD BR	MGD WR	MGD YR	
6/94	6/108	5/106	2/96	2/97	2/100	

Calving Ease Score: 2      Front Foot Score: 3.5  
Disposition Score: 4.5      Hind Foot Score: 4

- Moderate, thick, long and gentle.
- Full ET brother to Lots 15 and 16.
- Maternal ET brother to Lots 12, 15, 16 and 44.



**21**

**SHIPWHEEL PAYCHECK 7565**



Reg: 19227170 • Calved: 04/08/17

Basin Payweight 1682  
Basin Paycheck 5249  
Basin Lucy 3150

Basin Payweight 006S #  
21AR O Lass 7017  
Basin Rainmaker P175 #  
Basin Lucy 1667  
S Alliance 3313  
S Gloria 464 #  
Connealy Forefront #  
H C Miss Crissy 501

CED	11
BW	-.9
WW	67
YW	119
MILK	27
SC	0.5
CW	52
MB	1.06
RE	.44
FAT	.034

S Chisum 6175 #  
Shipwheel Crissy 412  
Apexette Crissy 4425

BW	205 WT	WR	YR	Scrotal	RE
74	691	108	106	37	.44
Dam BR	Dam WR	Dam YR	MGD BR	MGD WR	MGD YR
2/94	2/109	1/106	10/95	10/98	9/100

Calving Ease Score: 3      Front Foot Score: 4  
Disposition Score: 5      Hind Foot Score: 3

- A gentle bull that covers all the bases very well. Full brother in blood to Lot 6.
- Dam is a super nice, productive young Chisum with many full ET sisters in the herd. She bred back A.I. with a Resource bull calf and is well on her way to pathfinder status.



**22**

**SHIPWHEEL KEYSTONE 7543**



Reg: 19223567 • Calved: 03/19/17

Connealy Capitalist 028 #  
Myers Keystone M263  
Myers Queen M180

S A V Final Answer 0035 #  
Prides Pita of Conanga 8821  
Hoover Dam #  
Myers Proud Queen M363  
Sitz Uncommon #  
CCAR Maiden U923  
Connealy Thunder #  
Apex Chloe 702

CED	4
BW	1.2
WW	77
YW	129
MILK	30
SC	1.26
CW	66
MB	.55
RE	.69
FAT	.007

CCAR Uncommon Z317  
Shipwheel Chloe 5125  
Shipwheel Chloe 958

BW	205 WT	WR	YR	Scrotal	RE
77	760	119	118	38.5	.69
Dam BR	Dam WR	Dam YR	MGD BR	MGD WR	MGD YR
1/101	1/119	1/118	6/104	6/107	6/103

Calving Ease Score: 1      Front Foot Score: 4.5  
Disposition Score: 4.5      Hind Foot Score: 4.5

- Incredible performance and length in this gentle, good footed Keystone son.
- First calf heifer dam did an amazing job on her first and bred back A.I. for her second with a Montana heifer.
- Grand dam was a top cow.

**24**

**SHIPWHEEL PAYCHECK 7549**



Reg: 19227163 • Calved: 04/04/17

Basin Payweight 1682  
Basin Paycheck 5249  
Basin Lucy 3150

Basin Payweight 006S #  
21AR O Lass 7017  
Basin Rainmaker P175 #  
Basin Lucy 1667  
S Alliance 3313  
S Gloria 464 #  
Master Guru 0641  
DR J Miss Trav 722 B17

CED	7
BW	1.7
WW	56
YW	96
MILK	26
SC	1.12
CW	38
MB	.65
RE	.20
FAT	.043

S Chisum 6175 #  
Shipwheel Pinetop 251  
DR J Miss Guru 16

BW	205 WT	WR	YR	Scrotal	RE
83	655	103	98	38	.20
Dam BR	Dam WR	Dam YR	MGD BR	MGD WR	MGD YR
4/95	4/101	3/98	12/97	12/98	7/100

Calving Ease Score: 2      Front Foot Score: 4.5  
Disposition Score: 5      Hind Foot Score: 4.5

- Gentle, long and good footed.
- Dam is nice uddered, moderate and gentle.
- Grand dam was a donor and produced up into her teens.
- We have used this bull for natural service.

**23**

**SHIPWHEEL KEYSTONE 7551**



Reg: 19223560 • Calved: 03/18/17

Connealy Capitalist 028 #  
Myers Keystone M263  
Myers Queen M180

S A V Final Answer 0035 #  
Prides Pita of Conanga 8821  
Hoover Dam #  
Myers Proud Queen M363  
S Chisum 6175 #  
Dr J Ms Wide Track 374 M15  
Sitz Far & Wide 6908  
Shipwheel Eriskay 818

CED	7
BW	1.3
WW	79
YW	129
MILK	15
SC	1.71
CW	60
MB	.70
RE	.68
FAT	.014

Shipwheel Montana 2600  
Shipwheel Eriskay 546  
Shipwheel Eriskay 160 #

BW	205 WT	WR	YR	Scrotal	RE
78	702	110	106	42.5	.68
Dam BR	Dam WR	Dam YR	MGD BR	MGD WR	MGD YR
1/102	1/110	1/106	5/112	5/109	5/103

Calving Ease Score: 1      Front Foot Score: 4  
Disposition Score: 4.5      Hind Foot Score: 4

- A nice Keystone son that will sire extra length and pounds.
- Dam is a gentle, nice uddered first calf heifer from an influential cow family.
- She bred back A.I with a full brother to Lot 23.

**25**

**SHIPWHEEL PAYCHECK 7528**



Reg: 19227164 • Calved: 04/07/17

Basin Payweight 1682  
Basin Paycheck 5249  
Basin Lucy 3150

Basin Payweight 006S #  
21AR O Lass 7017  
Basin Rainmaker P175 #  
Basin Lucy 1667  
GDAR Game Day 449 #  
Sitz Beebe Queen 1956 #  
Sitz Far & Wide 6908  
Shipwheel Eriskay 821

CED	9
BW	0
WW	55
YW	91
MILK	30
SC	0.78
CW	35
MB	.59
RE	.45
FAT	.050

Sitz Icon 1054  
Shipwheel Eriskay 305  
Shipwheel Eriskay 161

BW	205 WT	WR	YR	Scrotal	RE
83	647	102	102	41	.45
Dam BR	Dam WR	Dam YR	MGD BR	MGD WR	MGD YR
3/108	3/107	3/104	3/94	3/100	3/98

Calving Ease Score: 3      Front Foot Score: 3.5  
Disposition Score: 4      Hind Foot Score: 4

- Good length and depth of flank.
- Dam is a moderate, hardworking, gentle young cow.



**26**

**SHIPWHEEL PAYCHECK 7586**



Reg: 19227165 • Calved: 04/07/17

CED	1
BW	4.2
WW	77
YW	132
MILK	22
SC	1.16
CW	60
MB	1.03
RE	.06
FAT	.056

Basin Payweight 1682  
**Basin Paycheck 5249**  
 Basin Lucy 3150

Basin Payweight 006S #  
 21AR O Lass 7017  
 Basin Rainmaker P175 #  
 Basin Lucy 1667  
 Feltons Meat Packer 62 #  
 Bestrelle of Conanga 539  
 Leachman Right Time #  
 S Gloria 0118

Connealy Packer 547 #  
**Shipwheel Gloria 322**  
 S Gloria 209 #

BW	205 WT	WR	YR	Scrotal	RE
92	673	106	100	38	FAT .056
Dam BR	Dam WR	Dam YR	MGD BR	MGD WR	MGD YR
2/107	2/102	2/99	9/99	9/103	8/101

Calving Ease Score: 1      Front Foot Score: 4.5  
 Disposition Score: 4      Hind Foot Score: 4

- Nice profile and excellent feet.
- Dam is gentle, nice uddered and a solid producer.
- We have used this bull for natural service.



**27**

**SHIPWHEEL PAYCHECK 7577**



Reg: 19227166 • Calved: 04/04/17

CED	10
BW	1.0
WW	68
YW	122
MILK	33
SC	1.18
CW	51
MB	.92
RE	.45
FAT	.026

Basin Payweight 1682  
**Basin Paycheck 5249**  
 Basin Lucy 3150

Basin Payweight 006S #  
 21AR O Lass 7017  
 Basin Rainmaker P175 #  
 Basin Lucy 1667  
 S Chisum 6175 #  
 S Beaufort 3145  
 Connealy Danny Boy #  
 DR J Miss Apex 053-K118

S John Wayne  
**Shipwheel Chloe 370**  
 DR J Ms Danny Boy M64 #

BW	205 WT	WR	YR	Scrotal	RE
78	661	104	103	36	FAT .026
Dam BR	Dam WR	Dam YR	MGD BR	MGD WR	MGD YR
3/96	3/103	3/101	6/94	6/108	5/106

Calving Ease Score: 3      Front Foot Score: 3  
 Disposition Score: 4      Hind Foot Score: 3

- A little more frame with good length.
- Dam is a long bodied, angular young cow with a nice udder.

**28**

**SHIPWHEEL PAYCHECK 7529**



Reg: 19227171 • Calved: 04/02/17

CED	12
BW	-.6
WW	56
YW	101
MILK	29
SC	0.08
CW	31
MB	.65
RE	.52
FAT	.032

Basin Payweight 1682  
**Basin Paycheck 5249**  
 Basin Lucy 3150

Basin Payweight 006S #  
 21AR O Lass 7017  
 Basin Rainmaker P175 #  
 Basin Lucy 1667  
 S Chisum 6175 #  
 S Blossom 0278 #  
 Sitz Upward 307R #  
 DR J Ms Danny Boy M63

S Chisum 255  
**Shipwheel Lady 421**  
 Shipwheel Lady 1116

BW	205 WT	WR	YR	Scrotal	RE
72	633	99	98	36.5	FAT .032
Dam BR	Dam WR	Dam YR	MGD BR	MGD WR	MGD YR
2/92	2/101	2/100	4/89	4/103	4/102

Calving Ease Score: 3      Front Foot Score: 3  
 Disposition Score: 4      Hind Foot Score: 3

- A deep middled, showy bull that is easy to find in the pen.
- Dam is a small teated, deep flanked, young cow from a very productive cow family.



**29**

**SHIPWHEEL CHISUM 7663**



Reg: 19223603 • Calved: 05/11/17

CED	8
BW	-.2
WW	52
YW	76
MILK	25
SC	0.61
CW	31
MB	.38
RE	.22
FAT	.054

S Chisum 6175 #  
S Chisum 255  
S Blossom 0278 #

S Alliance 3313  
S Gloria 464 #  
Shipwheel Chinook #  
S Blossom 8378 #  
Apex Focus 053  
DR J Miss ND 878-J61 #  
Apex Wide Track 374  
Vermilion Blackbird 7482

Dr J Apex Focus 053-M89  
Shipwheel Blackbird 959  
Apex Blackbird 693

BW	205 WT	WR	YR	Scrotal	RE
85	674	104	100	37	
Dam BR	Dam WR	Dam YR	MGD BR	MGD WR	MGD YR
7/107	7/106	6/106	4/104	4/103	2/105

Calving Ease Score: 2      Front Foot Score: 4  
Disposition Score: 4      Hind Foot Score: 4.5

- A good-looking rascal here. He's easy to find.
- Dam is a gentle, easy keeping, nice uddered cow that brings in a good one every year.



**30**

**SHIPWHEEL SIGNATURE 7648**



Reg: 19223598 • Calved: 04/29/17

CED	4
BW	3.2
WW	68
YW	116
MILK	26
SC	1.17
CW	50
MB	-.02
RE	.63
FAT	.002

Boyd Signature 1014  
Shipwheel Signature 4541  
Shipwheel Black Pride 277

Kesslers Frontman R001 #  
Boyd Erica Dianna 9054  
Connealy Right Answer 746 #  
Shipwheel Black Pride 0146  
Felttons Meat Packer 62 #  
Bestrelle of Conanga 539  
Shipwheel Chinook #  
Shipwheel Enchantress 965

Connealy Packer 547 #  
Shipwheel Enchantress 311  
Shipwheel Enchantress 190

BW	205 WT	WR	YR	Scrotal	RE
89	676	105	108	38	
Dam BR	Dam WR	Dam YR	MGD BR	MGD WR	MGD YR
3/107	3/105	3/104	5/109	5/102	5/101

Calving Ease Score: 1      Front Foot Score: 4.5  
Disposition Score: 4      Hind Foot Score: 4.5

- A bull that we really like. Very well balanced with a nice profile.
- Dam is perfect uddered with excellent production. Many generations of outstanding udders in this cow family.



**31**

**SHIPWHEEL SIGNATURE 7659**



Reg: 19223588 • Calved: 05/01/17

CED	8
BW	.9
WW	46
YW	94
MILK	39
SC	1.37
CW	30
MB	.07
RE	.48
FAT	.004

Boyd Signature 1014  
Shipwheel Signature 4541  
Shipwheel Black Pride 277

Kesslers Frontman R001 #  
Boyd Erica Dianna 9054  
Connealy Right Answer 746 #  
Shipwheel Black Pride 0146  
S A V Final Answer 0035 #  
S A V Blackbird 5297  
Apex Focus 053  
Dr J Ms Conn L55

S A V Pioneer 7301 #  
Shipwheel Lady 009  
Shipwheel Lady 866

BW	205 WT	WR	YR	Scrotal	RE
78	640	99	103	39	
Dam BR	Dam WR	Dam YR	MGD BR	MGD WR	MGD YR
6/99	6/102	6/102	3/99	3/108	2/105

Calving Ease Score: 3      Front Foot Score: 4.5  
Disposition Score: 4      Hind Foot Score: 4.5

- Another dandy Signature that is one of our top picks. He does many things very well.
- Dam is moderate, gentle and always raises a good one.
- We have used this bull for natural service.



**32**

**SHIPWHEEL UPWARD 7666**



Reg: 19223591 • Calved: 05/02/17

Sitz Upward 307R #  
**Shipwheel Upward 2517**  
 Shipwheel Enchantress 8184

Connealy Onward #  
 Sitz Henrietta Pride 81M  
 Holman 208 P44  
 Dr J Ms Apex 053 L35  
 Rally Dutchman 4068  
 Performiss 228  
 N Bar Emulation Ext Z1082  
 DR J Miss Trav 969 #

<b>CED</b>	<b>2</b>
<b>BW</b>	<b>2.6</b>
<b>WW</b>	<b>61</b>
<b>YW</b>	<b>117</b>
<b>MILK</b>	<b>19</b>
<b>SC</b>	<b>0.43</b>
<b>CW</b>	<b>56</b>
<b>MB</b>	<b>.49</b>
<b>RE</b>	<b>.44</b>
<b>FAT</b>	<b>.022</b>

Performer 833  
**Shipwheel Enchantress 109**  
 DR J Miss N Bar Ext C54

BW	205 WT	WR	YR	Scrotal	RE
87	642	100	107	37.5	FAT .022
Dam BR	Dam WR	Dam YR	MGD BR	MGD WR	MGD YR
5/102	5/99	4/100	13/95	14/100	10/100

Calving Ease Score: 1      Front Foot Score: 4  
 Disposition Score: 4      Hind Foot Score: 4

- A well balanced, no holes 2517 son.
- Dam is a bigger, easy fleshing, super soggy cow.

**34**

**SHIPWHEEL PACKER 7658**



Reg: 19223589 • Calved: 05/03/17

Connealy Packer 547 #  
**Shipwheel Packer 3505**  
 Shipwheel Black Pride 1124

Feltons Meat Packer 62 #  
 Bestelle of Conanga 539  
 Sitz Far & Wide 6908  
 DR J Miss ND 878-J61 #  
 S A V Pioneer 7301 #  
 S A V Final Answer 0035 #  
 S A V Blackbird 5297  
 Apex Focus 053  
 DR J Miss D J H 019 B93

<b>CED</b>	<b>-1</b>
<b>BW</b>	<b>3.8</b>
<b>WW</b>	<b>57</b>
<b>YW</b>	<b>107</b>
<b>MILK</b>	<b>21</b>
<b>SC</b>	<b>1.1</b>
<b>CW</b>	<b>40</b>
<b>MB</b>	<b>.19</b>
<b>RE</b>	<b>.49</b>
<b>FAT</b>	<b>.014</b>

S A V Pioneer 7301 #  
**Shipwheel Enchantress 018**  
 Shipwheel Enchantress 880

BW	205 WT	WR	YR	Scrotal	RE
97	644	100	102	38.5	FAT .014
Dam BR	Dam WR	Dam YR	MGD BR	MGD WR	MGD YR
6/105	6/103	5/104	1/119	1/111	

Calving Ease Score: 1      Front Foot Score: 3  
 Disposition Score: 3      Hind Foot Score: 2.5

- A super impressive individual. He's long, thick and tracks wide.
- Dam is long, gentle and feminine. She is the Grand dam to the Lot 4 bull.

**33**

**SHIPWHEEL UPWARD 7665**



Reg: 19223601 • Calved: 05/03/17

Sitz Upward 307R #  
**Shipwheel Upward 2517**  
 Shipwheel Enchantress 8184

Connealy Onward #  
 Sitz Henrietta Pride 81M  
 Holman 208 P44  
 Dr J Ms Apex 053 L35  
 Apex High Time 103  
 Apexette 880B Lucy 7014  
 Master Guru 0641  
 DR J Miss D J H 019 B93

<b>CED</b>	<b>-1</b>
<b>BW</b>	<b>4.3</b>
<b>WW</b>	<b>70</b>
<b>YW</b>	<b>118</b>
<b>MILK</b>	<b>17</b>
<b>SC</b>	<b>2.1</b>
<b>CW</b>	<b>44</b>
<b>MB</b>	<b>.51</b>
<b>RE</b>	<b>.34</b>
<b>FAT</b>	<b>.033</b>

Apex High Time 665  
**Shipwheel Enchantress 870**  
 DR J Miss Guru-K93 ##

BW	205 WT	WR	YR	Scrotal	RE
95	655	102	105	40	FAT .033
Dam BR	Dam WR	Dam YR	MGD BR	MGD WR	MGD YR
8/105	8/101	6/100	9/106	9/100	6/103

Calving Ease Score: 1      Front Foot Score: 3.5  
 Disposition Score: 4      Hind Foot Score: 4

- Another dandy 2517 that will sire an outstanding set of calves.
- Dam is a bigger, super deep bodied, easy fleshing, solid producing cow.

**35**

**SHIPWHEEL MONTANA 7654**



Reg: 19223602 • Calved: 05/16/17

S Chisum 6175 #  
**Shipwheel Montana 2600**  
 Dr J Ms Wide Track 374 M15

S Alliance 3313  
 S Gloria 464 #  
 Apex Wide Track 374  
 DR J Miss Guru I6  
 Sitz Rainmaker 6169 #  
 Sitz Elsiemere 331 #  
 Vermilion Dateline 7078 #  
 Apexette Dynamo Lass 2077

<b>CED</b>	<b>-4</b>
<b>BW</b>	<b>5.0</b>
<b>WW</b>	<b>57</b>
<b>YW</b>	<b>100</b>
<b>MILK</b>	<b>21</b>
<b>SC</b>	<b>1.21</b>
<b>CW</b>	<b>49</b>
<b>MB</b>	<b>.25</b>
<b>RE</b>	<b>.49</b>
<b>FAT</b>	<b>.048</b>

Sitz Rainmaker 6536  
**Shipwheel Lass 942**  
 Apexette Lass 4412 ##

BW	205 WT	WR	YR	Scrotal	RE
102	652	101	106	38.5	FAT .048
Dam BR	Dam WR	Dam YR	MGD BR	MGD WR	MGD YR
6/106	6/102	5/106	6/106	6/105	4/108

Calving Ease Score: 1      Front Foot Score: 4  
 Disposition Score: 4      Hind Foot Score: 4

- A good Montana son with a bit more frame.
- Easy fleshing dam has been a consistent producer.





### SHIPWHEEL SIGNATURE 7656



Reg: 19223592 • Calved: 05/13/17

Boyd Signature 1014  
Shipwheel Signature 4541  
Shipwheel Black Pride 277

Kesslers Frontman R001 #  
Boyd Erica Dianna 9054  
Connealy Right Answer 746 #  
Shipwheel Black Pride 0146  
Connealy Onward #  
Sitz Henrietta Pride 81M  
Apex Focus 053  
DR J Miss Guru I90

<b>CED</b>	<b>-2</b>
<b>BW</b>	<b>5.2</b>
<b>WW</b>	<b>73</b>
<b>YW</b>	<b>127</b>
<b>MILK</b>	<b>26</b>
<b>SC</b>	<b>0.83</b>
<b>CW</b>	<b>59</b>
<b>MB</b>	<b>.39</b>
<b>RE</b>	<b>.48</b>
<b>FAT</b>	<b>.023</b>
<b>Dam BR</b>	<b>6/100</b>
<b>Dam WR</b>	<b>6/103</b>
<b>Dam YR</b>	<b>5/105</b>
<b>MGD BR</b>	<b>3/101</b>
<b>MGD WR</b>	<b>3/104</b>
<b>MGD YR</b>	<b>1/100</b>

Sitz Upward 307R #  
Shipwheel Lileth 0113  
Dr J Ms Apex Focus 053 M73

<b>BW</b>	<b>205 WT</b>	<b>WR</b>	<b>YR</b>	<b>Scrotal</b>	
<b>99</b>	<b>678</b>	<b>105</b>	<b>108</b>	<b>38.5</b>	
<b>Dam BR</b>	<b>Dam WR</b>	<b>Dam YR</b>	<b>MGD BR</b>	<b>MGD WR</b>	<b>MGD YR</b>
<b>6/100</b>	<b>6/103</b>	<b>5/105</b>	<b>3/101</b>	<b>3/104</b>	<b>1/100</b>

Calving Ease Score: 1      Front Foot Score: 4  
Disposition Score: 3      Hind Foot Score: 4

- A dandy signature with extra thickness & body.
- Dam is a medium framed, excellent producer.



### SHIPWHEEL UNIVERSAL 7511



Reg: +19227155 • Calved: 03/29/17

S A V International 2020  
S A V Universal 4038  
S A V Blackcap May 4136

S A V Harvester 0338  
S A V Emblynette 5483 #  
S A V 8180 Traveler 004 #  
S A V May 2397 #  
G D A R Rolls Royce 203 #  
G D A R Blackcap Lady 7225  
N Bar Emulation Ext Z1082  
R B Pinetop of 83

<b>CED</b>	<b>-2</b>
<b>BW</b>	<b>6.1</b>
<b>WW</b>	<b>61</b>
<b>YW</b>	<b>111</b>
<b>MILK</b>	<b>32</b>
<b>SC</b>	<b>1.31</b>
<b>CW</b>	<b>57</b>
<b>MB</b>	<b>.05</b>
<b>RE</b>	<b>.83</b>
<b>FAT</b>	<b>-.035</b>
<b>Dam BR</b>	<b>12/102</b>
<b>Dam WR</b>	<b>12/106</b>
<b>Dam YR</b>	<b>10/104</b>
<b>MGD BR</b>	<b>11/101</b>
<b>MGD WR</b>	<b>11/102</b>
<b>MGD YR</b>	<b>9/104</b>

B H Rolls Royce 944  
D R J Miss Rolls Royce F17 #  
DR J Miss N Bar 17

<b>BW</b>	<b>205 WT</b>	<b>WR</b>	<b>YR</b>	<b>Scrotal</b>	
<b>103</b>	<b>698</b>	<b>112</b>	<b>109</b>	<b>41</b>	
<b>Dam BR</b>	<b>Dam WR</b>	<b>Dam YR</b>	<b>MGD BR</b>	<b>MGD WR</b>	<b>MGD YR</b>
<b>12/102</b>	<b>12/106</b>	<b>10/104</b>	<b>11/101</b>	<b>11/102</b>	<b>9/104</b>

Calving Ease Score: 1      Front Foot Score: 3  
Disposition Score: 4.5      Hind Foot Score: 4

- Extra length & bone in this good Universal Embryo bull.
- Full ET brother to Lot 38.
- Maternal brother to Lots 11 & 81



### SHIPWHEEL UNIVERSAL 7504



Reg: 19227161 • Calved: 03/26/17

S A V International 2020  
S A V Universal 4038  
S A V Blackcap May 4136

S A V Harvester 0338  
S A V Emblynette 5483 #  
S A V 8180 Traveler 004 #  
S A V May 2397 #  
G D A R Rolls Royce 203 #  
G D A R Blackcap Lady 7225  
N Bar Emulation Ext Z1082  
R B Pinetop of 83

<b>CED</b>	<b>-6</b>
<b>BW</b>	<b>5.1</b>
<b>WW</b>	<b>58</b>
<b>YW</b>	<b>107</b>
<b>MILK</b>	<b>24</b>
<b>SC</b>	<b>1.39</b>
<b>CW</b>	<b>54</b>
<b>MB</b>	<b>.01</b>
<b>RE</b>	<b>.77</b>
<b>FAT</b>	<b>-.025</b>
<b>Dam BR</b>	<b>12/102</b>
<b>Dam WR</b>	<b>12/106</b>
<b>Dam YR</b>	<b>10/104</b>
<b>MGD BR</b>	<b>11/101</b>
<b>MGD WR</b>	<b>11/102</b>
<b>MGD YR</b>	<b>9/104</b>

B H Rolls Royce 944  
D R J Miss Rolls Royce F17 #  
DR J Miss N Bar 17

<b>BW</b>	<b>205 WT</b>	<b>WR</b>	<b>YR</b>	<b>Scrotal</b>	
<b>92</b>	<b>635</b>	<b>100</b>	<b>100</b>	<b>39</b>	
<b>Dam BR</b>	<b>Dam WR</b>	<b>Dam YR</b>	<b>MGD BR</b>	<b>MGD WR</b>	<b>MGD YR</b>
<b>12/102</b>	<b>12/106</b>	<b>10/104</b>	<b>11/101</b>	<b>11/102</b>	<b>9/104</b>

Calving Ease Score: 1      Front Foot Score: 4  
Disposition Score: 4.5      Hind Foot Score: 5

- Very similar in type & kind to Lot 37.
- Full ET brother to Lot 37.
- Maternal brother to Lots 11 & 81.





# SHIPWHEEL UPWARD 7579



Reg: 19223544 • Calved: 04/03/17

CED	9
BW	-.1
WW	64
YW	116
MILK	30
SC	1.08
CW	56
MB	.13
RE	.50
FAT	.025

Sitz Upward 307R #  
**Shipwheel Upward 2517**  
 Shipwheel Enchantress 8184

Connealy Onward #  
 Sitz Henrietta Pride 81M  
 Holman 208 P44  
 Dr J Ms Apex 053 L35  
 KMK Alliance 6595 187 #  
 PGC New Design 566  
 Connealy Thunder #  
 Apexette Eriskay 3060

PGC Alliance 187- 9045  
**Shipwheel Eriskay 174**  
 Shipwheel Eriskay 929

BW	205 WT	WR	YR	Scrotal	RE
79	697	109	105	41	
Dam BR	Dam WR	Dam YR	MGD BR	MGD WR	MGD YR
5/91	5/103	4/103	5/102	5/98	5/99

Calving Ease Score: 3      Front Foot Score: 2  
 Disposition Score: 5      Hind Foot Score: 3

- A bull that impresses from every angle. Thick top & quarter.
- Dam is a medium framed, nice uddered cow that brings in a dandy every year. A son sold to Spickler Ranch North, ND in 2016.



# SHIPWHEEL MONTANA 7566



Reg: 19223552 • Calved: 04/05/17

CED	-3
BW	5.9
WW	76
YW	127
MILK	19
SC	0.92
CW	69
MB	.34
RE	.54
FAT	.015

S Chisum 6175 #  
**Shipwheel Montana 2600**  
 Dr J Ms Wide Track 374 M15

S Alliance 3313  
 S Gloria 464 #  
 Apex Wide Track 374  
 DR J Miss Guru I6  
 Sitz Upward 307R #  
 Sitz Barbaramere Nell 653  
 H A R B Windy 702 JH #  
 Apexette Chloe 4424 #

Sitz Far & Wide 6908  
**Shipwheel Chloe 4134**  
 Shipwheel Chloe 050

BW	205 WT	WR	YR	Scrotal	RE
96	629	99	102	39	
Dam BR	Dam WR	Dam YR	MGD BR	MGD WR	MGD YR
2/111	2/92	1/102	5/100	5/101	4/100

Calving Ease Score: 1      Front Foot Score: 2.5  
 Disposition Score: 4.5      Hind Foot Score: 3

- A gentle Montana son with added frame & length.
- Dam is a medium framed, easy fleshing young cow with a nice udder. Strong cow family.



# SHIPWHEEL CHISUM 7574



Reg: 19223551 • Calved: 03/22/17

CED	6
BW	.5
WW	59
YW	100
MILK	29
SC	0.97
CW	44
MB	.09
RE	.57
FAT	.018

S Chisum 6175 #  
**S Chisum 255**  
 S Blossom 0278 #

S Alliance 3313  
 S Gloria 464 #  
 Shipwheel Chinook #  
 S Blossom 8378 #  
 Sitz Upward 307R #  
 Shipwheel Enchantress 8184  
 Apex High Time 665  
 D R J Miss Rolls Royce F17 #

Shipwheel Upward 2517  
**Shipwheel Pinetop 582**  
 Shipwheel Pinetop 0244

BW	205 WT	WR	YR	Scrotal	RE
77	654	103	103	37	
Dam BR	Dam WR	Dam YR	MGD BR	MGD WR	MGD YR
1/101	1/103	1/103	6/105	6/97	5/101

Calving Ease Score: 3      Front Foot Score: 4  
 Disposition Score: 3.5      Hind Foot Score: 4

- A well balanced 255 with a powerful maternal lineage.
- Dam is a fancy, long fronted, angular first calf heifer with a nice udder. She bred A.I. for her 2nd calf.
- Great Grand dam is the F17 donor dam of Lots 11, 37, 38 & 81.



# SHIPWHEEL MONTANA 7564



Reg: 19223553 • Calved: 03/28/17

CED	3
BW	3.6
WW	72
YW	125
MILK	15
SC	1.75
CW	54
MB	.45
RE	.40
FAT	.036

S Chisum 6175 #  
**Shipwheel Montana 2600**  
 Dr J Ms Wide Track 374 M15

S Alliance 3313  
 S Gloria 464 #  
 Apex Wide Track 374  
 DR J Miss Guru I6  
 Sitz Upward 307R #  
 Sitz Barbaramere Nell 653  
 Sitz Tradition RLS 8702 #  
 Apexette Eriskay 1000

Sitz Far & Wide 6908  
**Shipwheel Eriskay 4139**  
 Apex Eriskay 600

BW	205 WT	WR	YR	Scrotal	RE
76	640	100	99	39	
Dam BR	Dam WR	Dam YR	MGD BR	MGD WR	MGD YR
2/93	2/93	1/99	8/93	8/98	4/99

Calving Ease Score: 1      Front Foot Score: 3.5  
 Disposition Score: 4.5      Hind Foot Score: 2

- A deep flanked Montana son that will add pay weight to his calves.
- Dam is medium framed, deep ribbed with an excellent udder.



# SHIPWHEEL CHISUM 7605



Reg: 19223549 • Calved: 03/22/17

CED	7
BW	.3
WW	45
YW	74
MILK	32
SC	0.83
CW	27
MB	.37
RE	.52
FAT	.009

S Chisum 6175 #  
**S Chisum 255**  
 S Blossom 0278 #

S Alliance 3313  
 S Gloria 464 #  
 Shipwheel Chinook #  
 S Blossom 8378 #  
 Rito 707 of Ideal 3407 7075  
 S A V Blackcap May 4136  
 Apex Wide Track 374  
 DR J Miss Guru I6

S A V Resource 1441 #  
**Shipwheel Pinetop 513**  
 Dr J Ms Wide Track 374 M15

BW	205 WT	WR	YR	Scrotal	RE
72	642	101	95	36	
Dam BR	Dam WR	Dam YR	MGD BR	MGD WR	MGD YR
1/95	1/101	1/95	7/94	7/103	6/103

Calving Ease Score: 3      Front Foot Score: 3  
 Disposition Score: 3      Hind Foot Score: 4

- A royally bred, calving ease 255 son.
- Dam is one of our favorite first calf heifers. She had many ET brothers that were highlights of our 2016 sale as well as many ET sisters working in our herd.
- Grand dam is the mother to Shipwheel Montana.



### SHIPWHEEL UNIVERSAL 7507



Reg: +19228549 • Calved: 04/02/17

S A V International 2020  
S A V Universal 4038  
S A V Blackcap May 4136

S A V Harvester 0338  
S A V Emblynette 5483 #  
S A V 8180 Traveler 004 #  
S A V May 2397 #  
Connealy Timeline #  
Energy of Conanga 4851  
Apex Focus 053  
DR J Miss Time C102

CED	3
BW	4.6
WW	57
YW	108
MILK	33
SC	1.35
CW	50
MB	.59
RE	.78
FAT	-.036

Connealy Danny Boy #  
DR J Ms Danny Boy M64 #  
DR J Miss Apex 053-K118

BW	205 WT	WR	YR	Scrotal	RE
103	670	107	104	37.5	.78
Dam BR	Dam WR	Dam YR	MGD BR	MGD WR	MGD YR
6/94	6/108	5/106	2/96	2/97	2/100

Calving Ease Score: 1      Front Foot Score: 4  
Disposition Score: 4      Hind Foot Score: 4

- Another nice embryo Universal son with excellent length & extra bone.
- Maternal ET brother to Lots 12, 15, 16 & 19.



© AnnieOPhotos



### SHIPWHEEL RESOURCE 7618



Reg: 19227177 • Calved: 04/11/17

Rito 707 of Ideal 3407 7075  
S A V Resource 1441 #  
S A V Blackcap May 4136

R R Rito 707 #  
Ideal 3407 of 1418 076  
S A V 8180 Traveler 004 #  
S A V May 2397 #

CED	0
BW	2.9
WW	57
YW	105
MILK	26
SC	0.41
CW	59
MB	.27
RE	.66
FAT	.000

Connealy Packer 547 #  
Shipwheel Blackbird 4126  
Shipwheel Blackbird 959

Feltons Meat Packer 62 #  
Bestelle of Conanga 539  
Dr J Apex Focus 053-M89  
Apex Blackbird 693

BW	205 WT	WR	YR	Scrotal	RE
92	652	102	108	38	.66
Dam BR	Dam WR	Dam YR	MGD BR	MGD WR	MGD YR
2/107	2/103	2/107	7/107	7/106	6/106

Calving Ease Score: 1      Front Foot Score: 2.5  
Disposition Score: 4      Hind Foot Score: 4

- A wide based, good looking Resource.
- Dam is an easy going, excellent uddered young Packer that bred back A.I. with a full brother to 7618.
- A son sold in 2017 to Baltrusch Angus Ranch, MT.



AnnieOPhotos





### SHIPWHEEL PACKER 7604



Reg: 19223579 • Calved: 04/01/17

Connealy Packer 547 #  
Shipwheel Packer 5553  
Shipwheel Enchantress 005

Feltons Meat Packer 62 #  
Bestrelle of Conanga 539  
S A V Pioneer 7301 #  
Shipwheel Enchantress 8184  
S Chisum 6175 #  
Dr J Ms Wide Track 374 M15  
Kesslers Frontman R001 #  
Shipwheel Eriskay 930

CED	4
BW	3.2
WW	70
YW	119
MILK	25
SC	1.84
CW	64
MB	.56
RE	.51
FAT	.027

BW	205 WT	WR	YR	Scrotal	RE
82	727	114	114	43	
Dam BR	Dam WR	Dam YR	MGD BR	MGD WR	MGD YR
1/107	1/114	1/114	5/102	5/105	5/104

Calving Ease Score: 1      Front Foot Score: 3  
Disposition Score: 4.5      Hind Foot Score: 3

- Incredible length & performance in this big nutted Packer.
- Dam is a first calf Montana heifer that did an amazing job and bred back AI.
- Sire was purchased by Hugh Bradley, MT in our 2016 sale.



### SHIPWHEEL CHISUM 7547



Reg: 19223587 • Calved: 04/10/17

S Chisum 255  
Shipwheel Chisum 5544  
Shipwheel Lady 1116

S Chisum 6175 #  
S Blossom 0278 #  
Sitz Upward 307R #  
DR J Ms Danny Boy M63  
Sitz Upward 307R #  
Sitz Barbaramere Nell 653  
Master Guru 0641  
DR J Miss D J H 019 B93

CED	1
BW	2.5
WW	54
YW	92
MILK	22
SC	0.05
CW	33
MB	.47
RE	.65
FAT	.011

BW	205 WT	WR	YR	Scrotal	RE
84	655	103	102	36	
Dam BR	Dam WR	Dam YR	MGD BR	MGD WR	MGD YR
1/110	1/103	1/102	9/106	9/100	6/103

Calving Ease Score: 1      Front Foot Score: 3.5  
Disposition Score: 4.5      Hind Foot Score: 3.5

- Good length & disposition.
- First calf heifer descends from productivity & longevity.
- Pathfinder Grand dam produced well into her teens.
- Sire was purchased by Black Pine Farm, MT in 2016.



### SHIPWHEEL PACKER 7615



Reg: 19223580 • Calved: 04/13/17

Connealy Packer 547 #  
Shipwheel Packer 5553  
Shipwheel Enchantress 005

Feltons Meat Packer 62 #  
Bestrelle of Conanga 539  
S A V Pioneer 7301 #  
Shipwheel Enchantress 8184  
S Chisum 6175 #  
S Blossom 0278 #  
Sitz Upward 307R #  
DR J Ms Danny Boy M4

CED	2
BW	2.7
WW	71
YW	131
MILK	28
SC	1.55
CW	66
MB	.56
RE	.48
FAT	.015

BW	205 WT	WR	YR	Scrotal	RE
79	746	117	118	42	
Dam BR	Dam WR	Dam YR	MGD BR	MGD WR	MGD YR
1/104	1/117	1/118	4/97	4/102	3/95

Calving Ease Score: 1      Front Foot Score: 3  
Disposition Score: 4.5      Hind Foot Score: 4

- If you are looking to add performance and pay weight to your calves, check out Lots 46 & 47.
- Dam is a first calf 255 heifer that did an awesome job.



### SHIPWHEEL UPWARD 7600



Reg: 19223586 • Calved: 04/12/17

Shipwheel Upward 2517  
Shipwheel Upward 5514  
Shipwheel Eriskay 305

Sitz Upward 307R #  
Shipwheel Enchantress 8184  
Sitz Icon 1054  
Shipwheel Eriskay 161  
Rito 707 of Ideal 3407 7075  
S A V Blackcap May 4136  
Mytty In Focus #  
Apexette Lass 4412 #

CED	8
BW	1.4
WW	49
YW	94
MILK	30
SC	2.15
CW	53
MB	.30
RE	.77
FAT	-.018

BW	205 WT	WR	YR	Scrotal	RE
78	632	99	102	38.5	
Dam BR	Dam WR	Dam YR	MGD BR	MGD WR	MGD YR
1/102	1/99	1/102	6/106	6/92	3/99

Calving Ease Score: 3      Front Foot Score: 4  
Disposition Score: 4.5      Hind Foot Score: 4

- Good, solid all-around bull here.
- Very gentle first calf heifer that bred back A.I.
- Sire was purchased by Curry Cattle Co. MT in 2016.





WELCOME TO THE ♀

© AnnieOPhotos



© AnnieOPhotos



© AnnieOPhotos



© AnnieOPhotos



© AnnieOPhotos



© AnnieOPhotos



© AnnieOPhotos



© AnnieOPhotos



© AnnieOPhotos



© AnnieOPhotos



© AnnieOPhotos



© AnnieOPhotos



© AnnieOPhotos



# 2017 SALE DAY

*Our success has been based on partnerships from the very beginning*



© AnnieOPhotos



**50**

**SHIPWHEEL UNCOMMON 7629**



Reg: 19223572 • Calved: 05/25/17

Sitz Uncommon #  
CCAR Uncommon Z317  
CCAR Maiden U923

S Chisum 6175 #  
Shipwheel Chloe 354  
Shipwheel Chloe 970

Sitz Upward 307R #  
Sitz Ellunas Elite 1697  
Cole Creek Dunn Deal 144R  
Griffs Maiden P206  
S Alliance 3313  
S Gloria 464 #  
Sitz Rainmaker 6536  
Apexette Chloe 2050

CED	1
BW	3.6
WW	63
YW	114
MILK	20
SC	0.93
CW	59
MB	.17
RE	.45
FAT	.058
Dam BR	3/103
Dam WR	3/97
Dam YR	2/98
MGD BR	7/106
MGD WR	7/106
MGD YR	7/107

Calving Ease Score: 1      Front Foot Score: 4.5  
Disposition Score: 4      Hind Foot Score: 4.5

- One of our favorite Uncommon sons with excellent feet.
- Dam is an easy fleshing Chisum daughter from a very strong cow family.



**51**

**SHIPWHEEL REGIONS 7572**



Reg: 19227176 • Calved: 03/26/17

Koupal Advance 28  
LT Regions 4110  
LT Beauty 8398

S Chisum 255  
Shipwheel Black Pride 594  
Shipwheel Black Pride 1127

Koupal Juneau 797 #  
Koupal Ebonette 734  
SydGen Contact #  
L T Bando Beauty 9135  
S Chisum 6175 #  
S Blossom 0278 #  
Sitz Far & Wide 6908  
DR J Miss ND 878-J61 #

CED	7
BW	1.7
WW	46
YW	85
MILK	26
SC	1.29
CW	29
MB	.48
RE	.18
FAT	.006
Dam BR	1/81
Dam WR	1/94
Dam YR	1/101
MGD BR	5/104
MGD WR	5/99
MGD YR	3/106

Calving Ease Score: 3      Front Foot Score: 4  
Disposition Score: 3      Hind Foot Score: 4.5

- Nice profile to this muscled up, big nutted bull.
- Dam is a first calf heifer that descends from powerful maternal.
- Pathfinder Donor Great Grand dam.



**52**

**SHIPWHEEL PAYCHECK 7634**



Reg: 19227181 • Calved: 05/07/17

Basin Payweight 1682  
Basin Paycheck 5249  
Basin Lucy 3150

Sitz Tradition 8135 #  
Shipwheel Eriskay 821  
Apexette Eriskay 2030

Basin Payweight 006S #  
21AR O Lass 7017  
Basin Rainmaker P175 #  
Basin Lucy 1667  
Sitz Tradition RLS 8702 #  
Sitz Pride 132  
Wraf Illini Traveler  
Eriskay of Apex 9004

CED	6
BW	.4
WW	57
YW	85
MILK	24
SC	0.21
CW	35
MB	.68
RE	.64
FAT	.004
Dam BR	8/99
Dam WR	8/102
Dam YR	6/102
MGD BR	8/97
MGD WR	9/99
MGD YR	7/95

Calving Ease Score: 3      Front Foot Score: 4  
Disposition Score: 4.5      Hind Foot Score: 4

- One of our favorite Paycheck bulls from an awesome cow.
- Dam is currently 10 yrs. old and was a favorite at our stop on the Montana Angus Tour. She is wedged shaped and angular with a perfect udder. A son sold to Baltrusch Angus Ranch, MT in 2016.



**53**

### SHIPWHEEL SIGNATURE 7642



Reg: 19223595 • Calved: 05/05/17

Boyd Signature 1014  
**Shipwheel Signature 4541**  
 Shipwheel Black Pride 277

Kesslers Frontman R001 #  
 Boyd Erica Dianna 9054  
 Connealy Right Answer 746 #  
 Shipwheel Black Pride 0146  
 H A Image Maker 0415 #  
 Apex Eriskay 5506 #  
 Apex High Time 665  
 DR J Miss N Bar Ext C54

CED	2
BW	3.4
WW	59
YW	101
MILK	16
SC	0.78
CW	34
MB	.16
RE	.47
FAT	.000

Shipwheel Chinook #  
**Shipwheel Enchantress 190**  
 Shipwheel Enchantress 965

BW	205 WT	WR	YR	Scrotal	RE
100	715	111	106	39	
Dam BR	Dam WR	Dam YR	MGD BR	MGD WR	MGD YR
5/109	5/102	5/101	7/102	7/104	7/101

Calving Ease Score: 1      Front Foot Score: 4  
 Disposition Score: 4.5      Hind Foot Score: 4

- A moderate framed, thick made, eye catcher.
- Dam is a moderate, gentle, excellent uddered Chinook daughter from a long line of easy doing, excellent udders.
- A full brother sold to Pitchfork Cattle, MT in 2017.



**54**

### SHIPWHEEL KEYSTONE 7644



Reg: 19223594 • Calved: 05/29/17

Connealy Capitalist 028 #  
**Myers Keystone M263**  
 Myers Queen M180

S A V Final Answer 0035 #  
 Prides Pita of Conanga 8821  
 Hoover Dam #  
 Myers Proud Queen M363  
 Connealy Onward #  
 Sitz Henrietta Pride 81M  
 Apex Focus 053  
 DR J Miss 34 Time D107

CED	4
BW	1.1
WW	65
YW	106
MILK	19
SC	0.95
CW	46
MB	.41
RE	.48
FAT	.016

Sitz Upward 307R #  
**Shipwheel Black Pride 0187**  
 DR J Miss Apex 053-K61

BW	205 WT	WR	YR	Scrotal	RE
92	716	111	105	35.5	
Dam BR	Dam WR	Dam YR	MGD BR	MGD WR	MGD YR
6/102	6/109	6/107	9/108	9/107	6/107

Calving Ease Score: 1      Front Foot Score: 4.5  
 Disposition Score: 4.5      Hind Foot Score: 4.5

- A very complete, well-balanced Keystone from a powerful cow family.
- Dam is one of our very top producing cows that is on our donor short list.



**55**

### SHIPWHEEL CHISUM 7667



Reg: 19236964 • Calved: 05/10/17

S Chisum 6175 #  
**S Chisum 255**  
 S Blossom 0278 #

S Alliance 3313  
 S Gloria 464 #  
 Shipwheel Chinook #  
 S Blossom 8378 #  
 S A F Focus of E R #  
 Mytty Countess 906  
 Apex Wide Track 374  
 Apexette Chloe 2050

CED	8
BW	1.7
WW	59
YW	91
MILK	20
SC	.46
CW	38
MB	.45
RE	.48
FAT	.019

Mytty In Focus #  
**Shipwheel Chloe 802**  
 Apex Chloe 638

BW	205 WT	WR	YR	Scrotal	RE
90	619	96	100	37.5	
Dam BR	Dam WR	Dam YR	MGD BR	MGD WR	MGD YR
7/102	7/103	6/104	7/106	7/101	6/102

Calving Ease Score: 1      Front Foot Score: 4  
 Disposition Score: 4      Hind Foot Score: 4

- A good all-around 255 son.
- Dam is a bigger, easy doing, deep middled, gentle cow.
- Sons sold in 2016 & 2017 to Guy Bradley, MT.





### SHIPWHEEL UPWARD 7655



Reg: 19223606 • Calved: 04/24/17

Sitz Upward 307R #  
Shipwheel Upward 2517  
Shipwheel Enchantress 8184

Connealy Onward #  
Sitz Henrietta Pride 81M  
Holman 208 P44  
Dr J Ms Apex 053 L35  
Connealy Timeline #  
Energy of Conanga 4851  
Apex Focus 053  
DR J Miss Time C72

CED	9
BW	1.0
WW	62
YW	95
MILK	23
SC	1.3
CW	43
MB	.32

Connealy Danny Boy #  
DR J Ms Danny Boy M63  
DR J Miss Apex 053-K115

BW	205 WT	WR	YR	Scrotal	RE
77	661	102	99	40.5	.43
Dam BR	Dam WR	Dam YR	MGD BR	MGD WR	MGD YR
9/99	9/102	7/106	5/99	5/99	2/105

Calving Ease Score: 3      Front Foot Score: 3  
Disposition Score: 4.5      Hind Foot Score: 4

- A complete, big nutted bull.
- Dam had been an outstanding, consistent producer. She is a pretty cow that is currently 11 and still going strong.



### SHIPWHEEL PACKER 7643



Reg: 19227182 • Calved: 04/28/17

Feltons Meat Packer 62 #  
Connealy Packer 547 #  
Bestrelle of Conanga 539

Finks 5522-6148 #  
Graham N Mistress 8  
Dalebanks Extender 6012 #  
Besta of Conanga 6538 #  
Sitz Upward 307R #  
Sitz Barbaramere Nell 653  
Bon View New Design 878 #  
DR J Miss 34 Time D107

CED	1
BW	4.1
WW	63
YW	108
MILK	39
SC	0.81
CW	46
MB	.71

Sitz Far & Wide 6908  
Shipwheel Black Pride 1127  
DR J Miss ND 878-J61 #

BW	205 WT	WR	YR	Scrotal	RE
98	653	101	100	38.5	.27
Dam BR	Dam WR	Dam YR	MGD BR	MGD WR	MGD YR
5/104	5/99	3/106	5/109	5/109	4/104

Calving Ease Score: 1      Front Foot Score: 3  
Disposition Score: 3      Hind Foot Score: 4

- A stout boned, bigger framed Packer.
- Dam is an embryo daughter of one of the most powerful cows to ever reside here.



### SHIPWHEEL GULCH 7649



Reg: 19233053 • Calved: 04/29/17

S A V Resource 1441 #  
S R Gulch 441  
S R Polly 804

Rito 707 of Ideal 3407 7075  
S A V Blackcap May 4136  
Sitz Alliance 6595 #  
SR Polly 323 #

CED	9
BW	1.0
WW	58
YW	93
MILK	26
SC	0.6
CW	39
MB	.20

H A R B Windy 702 JH #  
Shipwheel Eriskay 003  
Shipwheel Eriskay 844

A A R Really Windy 1205 #  
H A R B Black Lady 073 J H #  
Sitz Tradition 8135 #  
Apexette Eriskay 9040 #

BW	205 WT	WR	YR	Scrotal	RE
88	656	102	94	37.5	.023
Dam BR	Dam WR	Dam YR	MGD BR	MGD WR	MGD YR
6/104	6/101	6/103	6/102	7/96	5/95

Calving Ease Score: 2      Front Foot Score: 4.5  
Disposition Score: 4      Hind Foot Score: 4

- A good muscle pattern to this lengthy Resource Grandson.
- Dam is one of our prettiest, excellent uddered Eriskay's.
- Donor 3rd & 4th dams produced well up into their teens.



### SHIPWHEEL KEYSTONE 7527



Reg: 19223562 • Calved: 03/25/17

Connealy Capitalist 028 #  
Myers Keystone M263  
Myers Queen M180

S A V Final Answer 0035 #  
Prides Pita of Conanga 8821  
Hoover Dam #  
Myers Proud Queen M363  
Kesslers Frontman R001 #  
Boyd Erica Dianna 9054  
S A V Iron Mountain 8066 #  
Shipwheel Verona 883

CED	2
BW	3.2
WW	63
YW	104
MILK	15
SC	0.26
CW	37
MB	.56

Boyd Signature 1014  
Shipwheel Verona 557  
Shipwheel Verona 226

BW	205 WT	WR	YR	Scrotal	RE
84	653	103	103	37	.043
Dam BR	Dam WR	Dam YR	MGD BR	MGD WR	MGD YR
1/110	1/103	1/103	4/96	4/95	3/96

Calving Ease Score: 1      Front Foot Score: 4.5  
Disposition Score: 4.5      Hind Foot Score: 4.5

- A good Keystone that covers all the bases and stands on excellent feet.
- Dam is a nice first calf heifer that did a fine job on her first calf.





# COMMERCIAL



Reg: 624709901 • Calved: 04/08/17

Connealy Capitalist 028 #  
Myers Keystone M263  
Myers Queen M180

S A V Final Answer 0035 #  
Prides Pita of Conanga 8821  
Hoover Dam #  
Myers Proud Queen M363

CED	
BW	
WW	
YW	
MILK	
SC	
CW	
MB	

BW	205 WT	WR	YR	Scrotal	RE
90	650	100	105	38.5	FAT
Dam BR	Dam WR	Dam YR	MGD BR	MGD WR	MGD YR

Calving Ease Score: 1      Front Foot Score: 4  
Disposition Score: 4.5      Hind Foot Score: 4

- A little bigger, deep flanked, gentle bull.
- Parentage cannot verify his mother so he sells as commercial.



# SHIPWHEEL RESOURCE 7628



Reg: 19227173 • Calved: 04/05/17

Rito 707 of Ideal 3407 7075  
S A V Resource 1441 #  
S A V Blackcap May 4136

R R Rito 707 #  
Ideal 3407 of 1418 076  
S A V 8180 Traveler 004 #  
S A V May 2397 #

BPF 752 Freestyle 0111  
Shiphwheel Eola 4111  
Shiphwheel Eola 874

BPF Freestyle 752  
Miss Wix 6140 of BPF #  
Apex High Time 665  
DR J Miss N D 878 H16

CED	-1
BW	3.1
WW	45
YW	94
MILK	15
SC	1.71
CW	40
MB	.49

BW	205 WT	WR	YR	Scrotal	RE
79	637	100	104	38	FAT .003
Dam BR	Dam WR	Dam YR	MGD BR	MGD WR	MGD YR
2/102	2/93	1/104	5/96	5/100	5/98

Calving Ease Score: 1      Front Foot Score: 4.5  
Disposition Score: 4.5      Hind Foot Score: 4.5

- A good Resource that takes care of the fundamentals.
- Dam is one of our favorites. She had A ratings in all of the categories at calving time.



# SHIPWHEEL KEYSTONE 7613



Reg: 19223561 • Calved: 03/17/17

Connealy Capitalist 028 #  
Myers Keystone M263  
Myers Queen M180

S A V Final Answer 0035 #  
Prides Pita of Conanga 8821  
Hoover Dam #  
Myers Proud Queen M363

Connealy Packer 547 #  
Shiphwheel Chloe 556  
Shiphwheel Chloe 219

Feltons Meat Packer 62 #  
Bestrelle of Conanga 539  
S Chisum 6175 #  
Shiphwheel Chloe 806

CED	13
BW	-.4
WW	50
YW	89
MILK	17
SC	1.55
CW	45
MB	.58

BW	205 WT	WR	YR	Scrotal	RE
71	603	95	100	37.5	FAT .022
Dam BR	Dam WR	Dam YR	MGD BR	MGD WR	MGD YR
1/94	1/95	1/100	3/96	4/99	3/101

Calving Ease Score: 3      Front Foot Score: 4  
Disposition Score: 4.5      Hind Foot Score: 4

- A good, medium framed, calving ease Keystone.
- Dam is an excellent uddered, gentle, first calf heifer.





### SHIPWHEEL KEYSTONE 7593



Reg: 19223563 • Calved: 03/18/17

Connealy Capitalist 028 #  
Myers Keystone M263  
Myers Queen M180

S A V Final Answer 0035 #  
Prides Pita of Conanga 8821  
Hoover Dam #  
Myers Proud Queen M363  
Shipwheel Dr J In Focus 9560  
BPF Forever Lady 651  
Sitz Emblazon 9598 #  
DR J Miss Checkmate E90 #

CED	1
BW	3.8
WW	61
YW	98
MILK	22
SC	0.48
CW	39
MB	.64
RE	.35
FAT	.060

BPF DR J 2110  
Shipwheel Lileth 565  
Shipwheel Lileth 1121

BW	205 WT	WR	YR	Scrotal	RE
84	601	94	99	37	
Dam BR	Dam WR	Dam YR	MGD BR	MGD WR	MGD YR
1/110	1/94	1/99	5/107	5/100	5/95

Calving Ease Score: 1      Front Foot Score: 4.5  
Disposition Score: 3.5      Hind Foot Score: 4.5

- A clean fronted bull with good muscle & bone.
- Dam is an easy doing, nice uddered first calf heifer.



### SHIPWHEEL CHISUM 7536



Reg: 19223583 • Calved: 04/13/17

S Chisum 255  
Shipwheel Chisum 5533  
Shipwheel Enchantress 311

S Chisum 6175 #  
S Blossom 0278 #  
Connealy Packer 547 #  
Shipwheel Enchantress 190  
Rito 707 of Ideal 3407 7075  
S A V Blackcap May 4136  
H A R B Windy 702 JH #  
Shipwheel Eriskay 844

S A V Resource 1441 #  
Shipwheel Eriskay 580  
Shipwheel Eriskay 003

CED	4
BW	2.7
WW	62
YW	105
MILK	19
SC	1.2
CW	41
MB	.26
RE	.44
FAT	.007

BW	205 WT	WR	YR	Scrotal	RE
85	663	104	103	37.5	
Dam BR	Dam WR	Dam YR	MGD BR	MGD WR	MGD YR
1/111	1/104	1/103	6/104	6/101	6/103

Calving Ease Score: 1      Front Foot Score: 4  
Disposition Score: 4.5      Hind Foot Score: 4

- A nice pattern to this moderate framed, soggy Chisum.
- Dam is an easy doing, moderate, nice uddered first calf heifer.
- Sire was purchased by Tande Ranch, MT in 2016.



### SHIPWHEEL KEYSTONE 7626



Reg: 19223558 • Calved: 04/04/17

Connealy Capitalist 028 #  
Myers Keystone M263  
Myers Queen M180

S A V Final Answer 0035 #  
Prides Pita of Conanga 8821  
Hoover Dam #  
Myers Proud Queen M363  
S Alliance 3313  
S Gloria 464 #  
Connealy Forefront #  
H C Miss Crissy 501

CED	6
BW	1.6
WW	71
YW	107
MILK	15
SC	0.38
CW	50
MB	.33
RE	.56
FAT	.048

S Chisum 6175 #  
Shipwheel Crissy 414  
Apexette Crissy 4425

BW	205 WT	WR	YR	Scrotal	RE
73	657	103	101	37	
Dam BR	Dam WR	Dam YR	MGD BR	MGD WR	MGD YR
2/93	2/98	2/100	10/95	10/98	9/100

Calving Ease Score: 2      Front Foot Score: 4.5  
Disposition Score: 4.5      Hind Foot Score: 4.5

- A medium framed, excellent footed Keystone.
- Dam is an eye appealing, very nice uddered embryo daughter of the 4425 cow, one of the best we've had.
- Full brother in blood to Lot 82.



### SHIPWHEEL CHISUM 7590



Reg: 19223578 • Calved: 05/02/17

S Chisum 255  
Shipwheel Chisum 5544  
Shipwheel Lady 1116

S Chisum 6175 #  
S Blossom 0278 #  
Sitz Upward 307R #  
DR J Ms Danny Boy M63  
S Chisum 6175 #  
S Blossom 0278 #  
Connealy Packer 547 #  
Shipwheel Eriskay 102

S Chisum 255  
Shipwheel Eriskay 541  
Shipwheel Eriskay 300

CED	5
BW	1.9
WW	60
YW	101
MILK	22
SC	1.4
CW	37
MB	.40
RE	.73
FAT	.015

BW	205 WT	WR	YR	Scrotal	RE
71	639	100	102	37.5	
Dam BR	Dam WR	Dam YR	MGD BR	MGD WR	MGD YR
1/94	1/100	1/102	2/107	2/107	2/102

Calving Ease Score: 2      Front Foot Score: 4.5  
Disposition Score: 4.5      Hind Foot Score: 4

- A medium framed, long spined, excellent footed Chisum.
- Dam is a fancy, small teated, first calf heifer that bred back A.I. for her second.





## SHIPWHEEL STRATEGY 7616



Reg: 19223573 • Calved: 04/23/17

S A V Resource 1441 #  
Pyramid Strategy 4086  
Glacial 20N BlackbirdEve 29R

Rito 707 of Ideal 3407 7075  
S A V Blackcap May 4136  
Glacial 7078 VRD 20N  
Glacial Blackbird Eve 33M

Shipwheel ForeFront 0567  
Shipwheel Chloe 425  
Shipwheel Chloe 1170

Mytty ForeFront 77P  
Apex Eriskay 624  
Kesslers Frontman R001 #  
Shipwheel Chloe 927

CED	-2
BW	3.5
WW	64
YW	120
MILK	29
SC	1.36
CW	57
MB	.47
RE	.83
FAT	-.015

BW	205 WT	WR	YR	Scrotal	
79	676	106	108	39.5	
Dam BR	Dam WR	Dam YR	MGD BR	MGD WR	MGD YR
2/100	2/103	2/105	4/93	4/99	4/99

Calving Ease Score: 1      Front Foot Score: 4  
Disposition Score: 4.5      Hind Foot Score: 4

- A long, thick Resource Grandson that has been a real standout.
- Dam is a perfect uddered, very gentle, young cow that bred back A.I. for her third.



## SHIPWHEEL STRATEGY 7531



Reg: 19223574 • Calved: 04/26/17

S A V Resource 1441 #  
Pyramid Strategy 4086  
Glacial 20N BlackbirdEve 29R

Rito 707 of Ideal 3407 7075  
S A V Blackcap May 4136  
Glacial 7078 VRD 20N  
Glacial Blackbird Eve 33M

S Chisum 255  
Shipwheel Eriskay 427  
Shipwheel Eriskay 150

S Chisum 6175 #  
S Blossom 0278 #  
Connealy Impression #  
Apex Eriskay 676

CED	15
BW	-2.5
WW	62
YW	110
MILK	21
SC	0.54
CW	45
MB	.62
RE	.97
FAT	.011

BW	205 WT	WR	YR	Scrotal	
64	623	98	99	37	
Dam BR	Dam WR	Dam YR	MGD BR	MGD WR	MGD YR
2/85	2/97	2/97	4/91	4/97	4/95

Calving Ease Score: 3      Front Foot Score: 4.5  
Disposition Score: 4.5      Hind Foot Score: 4.5

- A royally bred, moderate, long spined, muscled up, calving ease Strategy. Not very many Strategy sons this year but you will see a lot more in the future.
- Dam is a very gentle, smaller framed, nice uddered young cow.



## SHIPWHEEL REGIONS 7518



Reg: 19227175 • Calved: 03/20/17

Koupal Advance 28  
LT Regions 4110  
LT Beauty 8398

Koupal Juneau 797 #  
Koupal Ebonette 734  
SydGen Contact #  
L T Bando Beauty 9135

S Chisum 255  
Shipwheel Lady 540  
Shipwheel Lady 314

S Chisum 6175 #  
S Blossom 0278 #  
Connealy Packer 547 #  
Shipwheel Lady 1116

CED	13
BW	-.8
WW	50
YW	88
MILK	31
SC	1.63
CW	39
MB	.60
RE	.37
FAT	.020

BW	205 WT	WR	YR	Scrotal	
73	651	102	104	39.5	
Dam BR	Dam WR	Dam YR	MGD BR	MGD WR	MGD YR
1/96	1/102	1/104	3/83	3/101	3/98

Calving Ease Score: 3      Front Foot Score: 4  
Disposition Score: 4      Hind Foot Score: 4

- A wide based, attractive calving ease bull.
- Dam is a smaller framed, small teated first calf heifer that bred back A.I. with a Torque heifer.





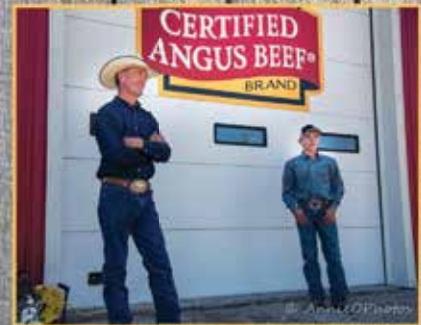
## Certified Angus Beef brand **BARN PAINTING**

Follow along at #BrandtheBarn





# Barn Painting - July 13, 2018



2018 marked the 40th Anniversary of Certified Angus Beef. As a way of showcasing & celebrating this milestone, the Certified Angus Beef team along with Troy Freeman from FreeSky Studios, did a 40 barns for 40 years promotion.

Our barn was #22 out of the 40 selected in the entire US and the only one in Montana. We're truly honored, excited and surprised to have been selected.

Certified Angus Beef has been such a success story, reaching higher sales with each and every year. Certified Angus Beef is the driving force behind our great product. A huge thank you goes to Paul Dykstra, Kurt Kangas, Deanna Walenciak, Brianna Gwartz & Troy Freeman for their efforts in making July 13 such a special day for us.



## SHIPWHEEL UNCOMMON 7558



Reg: 19223575 • Calved: 04/24/17

Sitz Uncommon #  
CCAR Uncommon Z317  
CCAR Maiden U923

Sitz Upward 307R #  
Sitz Ellunas Elite 1697  
Cole Creek Dunn Deal 144R  
Griffs Maiden P206

Connealy Eaman 076E #  
Shipwheel Eriskay 434  
Shipwheel Eriskay 175 #

Connealy Consensus #  
Brazila of Conanga 3991 839A  
Kesslers Frontman R001 #  
Shipwheel Eriskay 930

CED	8
BW	.1
WW	47
YW	89
MILK	30
SC	0.8
CW	35
MB	.18
RE	.43
FAT	-.005
Dam BR	2/94
Dam WR	2/100
Dam YR	2/101
MGD BR	5/102
MGD WR	5/105
MGD YR	5/104

Calving Ease Score: 2      Front Foot Score: 4.5  
Disposition Score: 4      Hind Foot Score: 4.5

- Good calving ease bull with excellent feet.
- Excellent uddered young dam bred back A.I. with a Torque bull.



## SHIPWHEEL UNCOMMON 7578



Reg: 19223576 • Calved: 05/02/17

Sitz Uncommon #  
CCAR Uncommon Z317  
CCAR Maiden U923

Sitz Upward 307R #  
Sitz Ellunas Elite 1697  
Cole Creek Dunn Deal 144R  
Griffs Maiden P206

BPF 752 Freestyle 0111  
Shipwheel Enchantress 485  
DR J Miss Guru-K93 #

BPF Freestyle 752  
Miss Wix 6140 of BPF #  
Master Guru 0641  
DR J Miss D J H 019 B93

CED	0
BW	4.2
WW	46
YW	83
MILK	27
SC	1.27
CW	26
MB	.25
RE	-.03
FAT	.016
Dam BR	2/113
Dam WR	2/98
Dam YR	2/98
MGD BR	9/106
MGD WR	9/100
MGD YR	6/103

Calving Ease Score: 1      Front Foot Score: 4  
Disposition Score: 4      Hind Foot Score: 3

- Solid cow bull with length.
- Dam is clean fronted & smooth. Cow family known for longevity & productivity.



## SHIPWHEEL SIGNATURE 7612



Reg: 19223585 • Calved: 03/31/17

Boyd Signature 1014  
Shipwheel Signature 4541  
Shipwheel Black Pride 277

Kesslers Frontman R001 #  
Boyd Erica Dianna 9054  
Connealy Right Answer 746 #  
Shipwheel Black Pride 0146

Shipwheel ForeFront 0567  
Shipwheel Eriskay 4110  
Apex Eriskay 5506 #

Mytty ForeFront 77P  
Apex Eriskay 624  
Mytty In Focus #  
Apexette Eriskay 3032

CED	16
BW	-3.4
WW	37
YW	70
MILK	29
SC	0.24
CW	14
MB	.12
RE	.06
FAT	.027
Dam BR	2/81
Dam WR	2/96
Dam YR	1/100
MGD BR	8/93
MGD WR	8/100
MGD YR	6/100

Calving Ease Score: 3      Front Foot Score: 2.5  
Disposition Score: 4.5      Hind Foot Score: 4

- A wide based, good looking, sleep all night heifer bull.
- Dam is perfect uddered & gentle. Grand dam is the mother to Shipwheel Chinook & Shipwheel Resource 5621.



**73**

**SHIPWHEEL RENOWN 7614**



Reg: 19227160 • Calved: 04/05/17

CED	-3
BW	2.6
WW	58
YW	103
MILK	21
SC	0.82
CW	42
MB	.05
RE	.66
FAT	.014

Rito 707 of Ideal 3407 7075  
**S A V Renown 3439**  
 S A V Blackcap May 4136

Sitz Emblazon 9598 #  
**Shipwheel Lileth 1121**  
 DR J Miss Checkmate E90 #

R R Rito 707 #  
 Ideal 3407 of 1418 076  
 S A V 8180 Traveler 004 #  
 S A V May 2397 #  
 Sitz RLS Emblazon 961P  
 Sitz Eisa Evergreen 176 #  
 Leachman Checkmate  
 Spearhead Lileth 452

<b>BW</b>	<b>205 WT</b>	<b>WR</b>	<b>YR</b>	<b>Scrotal</b>	<b>RE</b>
91	647	102	99	40	.014
<b>Dam BR</b>	<b>Dam WR</b>	<b>Dam YR</b>	<b>MGD BR</b>	<b>MGD WR</b>	<b>MGD YR</b>
5/107	5/100	5/95	10/109	10/104	8/103

Calving Ease Score: 1      Front Foot Score: 2  
 Disposition Score: 4      Hind Foot Score: 4

- An impressive bull with expressive thickness & length.
- Dam is a good looking, nice uddered, consistent producer.



**74**

**SHIPWHEEL RENOWN 7545**



Reg: 19227156 • Calved: 04/10/17

CED	2
BW	2.1
WW	58
YW	100
MILK	13
SC	0.5
CW	33
MB	.09
RE	.63
FAT	.002

Rito 707 of Ideal 3407 7075  
**S A V Renown 3439**  
 S A V Blackcap May 4136

Shipwheel Chinook 1549  
**Shipwheel Chloe 306**  
 Shipwheel Chloe 162

R R Rito 707 #  
 Ideal 3407 of 1418 076  
 S A V 8180 Traveler 004 #  
 S A V May 2397 #  
 Shipwheel Chinook #  
 Apexette Crissy 4425  
 Sitz Far & Wide 6908  
 Shipwheel Chloe 824

<b>BW</b>	<b>205 WT</b>	<b>WR</b>	<b>YR</b>	<b>Scrotal</b>	<b>RE</b>
91	607	95	94	39	.002
<b>Dam BR</b>	<b>Dam WR</b>	<b>Dam YR</b>	<b>MGD BR</b>	<b>MGD WR</b>	<b>MGD YR</b>
3/104	3/93	2/95	3/97	3/101	3/103

Calving Ease Score: 1      Front Foot Score: 4  
 Disposition Score: 4      Hind Foot Score: 4

- Another dandy Renown. Eye appealing with muscle & body.
- Dam is excellent uddered & gentle.



**75**

**SHIPWHEEL CHISUM 7573**



Reg: 19223547 • Calved: 04/07/17

CED	8
BW	-.7
WW	58
YW	89
MILK	29
SC	1.27
CW	37
MB	.22
RE	.33
FAT	.015

S Chisum 6175 #  
**S Chisum 255**  
 S Blossom 0278 #

Connealy Capitalist 028 #  
**Shipwheel Crissy 411**  
 Apexette Crissy 4425

S Alliance 3313  
 S Gloria 464 #  
 Shipwheel Chinook #  
 S Blossom 8378 #  
 S A V Final Answer 0035 #  
 Prides Pita of Conanga 8821  
 Connealy Forefront #  
 H C Miss Crissy 501

<b>BW</b>	<b>205 WT</b>	<b>WR</b>	<b>YR</b>	<b>Scrotal</b>	<b>RE</b>
76	637	100	100	39	.015
<b>Dam BR</b>	<b>Dam WR</b>	<b>Dam YR</b>	<b>MGD BR</b>	<b>MGD WR</b>	<b>MGD YR</b>
2/96	2/102	2/101	10/95	10/98	9/100

Calving Ease Score: 3      Front Foot Score: 4.5  
 Disposition Score: 4.5      Hind Foot Score: 4.5

- An excellent footed, gentle, calving ease bull.
- Dam is a perfect uddered, moderate, young cow that is and embryo sister to the mothers of Lots 1 & 2.





### SHIPWHEEL CHISUM 7624



Reg: 19223548 • Calved: 03/12/17

S Chisum 6175 #  
S Chisum 255  
S Blossom 0278 #

S Alliance 3313  
S Gloria 464 #  
Shipwheel Chinook #  
S Blossom 8378 #  
Feltons Meat Packer 62 #  
Bestrelle of Conanga 539  
Connealy Forefront #  
H C Miss Crissy 501

CED	11
BW	-1.9
WW	48
YW	80
MILK	17
SC	0.41
CW	19
MB	.01
RE	.50
FAT	.011

Connealy Packer 547 #  
Shipwheel Crissy 507  
Apexette Crissy 4425

BW	205 WT	WR	YR	Scrotal	RE
65	585	92	90	37.5	.50
Dam BR	Dam WR	Dam YR	MGD BR	MGD WR	MGD YR
1/87	1/92	1/90	10/95	10/98	9/100

Calving Ease Score: 3      Front Foot Score: 4  
Disposition Score: 2.5      Hind Foot Score: 4

- A shapely calving ease bull that got split up from his mother for most of the summer.
- Dam is a beautiful, excellent uddered, small teated first calf heifer.



### SHIPWHEEL RENOWN 7519



Reg: 19227159 • Calved: 04/09/17

Rito 707 of Ideal 3407 7075  
S A V Renown 3439  
S A V Blackcap May 4136

R R Rito 707 #  
Ideal 3407 of 1418 076  
S A V 8180 Traveler 004 #  
S A V May 2397 #  
Feltons Meat Packer 62 #  
Bestrelle of Conanga 539  
Apex Focus 053  
D R J Miss Rolls Royce F17 #

CED	2
BW	3.3
WW	57
YW	103
MILK	25
SC	1.25
CW	42
MB	.47
RE	.21
FAT	.053

Connealy Packer 547 #  
Shipwheel Pinetop 499  
DR J Ms Apex Focus 053 M26

BW	205 WT	WR	YR	Scrotal	RE
91	530	100	100	38	.21
Dam BR	Dam WR	Dam YR	MGD BR	MGD WR	MGD YR
2/107	2/96	1/100	9/102	9/106	8/104

Calving Ease Score: 1      Front Foot Score: 4.5  
Disposition Score: 4.5      Hind Foot Score: 4.5

- A dandy, excellent footed Renown. He was orphaned for the entire summer and ratioed as his own contemporary.
- Dam is a very nice young cow that had A ratings across the board at calving time.
- Great Grand dam is the mother to Lots 11, 37, 38 & 81.



### SHIPWHEEL MONTANA 7622



Reg: 19223545 • Calved: 04/05/17

S Chisum 6175 #  
Shipwheel Montana 2600  
Dr J Ms Wide Track 374 M15

S Alliance 3313  
S Gloria 464 #  
Apex Wide Track 374  
DR J Miss Guru I6  
Connealy Front Page 0228 #  
Kesslers Bell 0024  
Schurrtop American 5846 #  
Apex Eriskay 600

CED	4
BW	2.7
WW	48
YW	82
MILK	30
SC	1.95
CW	40
MB	.12
RE	.38
FAT	.030

Kesslers Frontman R001 #  
Shipwheel Eriskay 177  
Shipwheel Eriskay 937

BW	205 WT	WR	YR	Scrotal	RE
83	597	94	95	42	.030
Dam BR	Dam WR	Dam YR	MGD BR	MGD WR	MGD YR
5/96	5/99	5/96	3/95	3/91	2/99

Calving Ease Score: 1      Front Foot Score: 4  
Disposition Score: 4.5      Hind Foot Score: 4

- This big nutted Montana is gentle & long with a bit more frame.
- Dam is nice uddered and has raised some dandies!



### SHIPWHEEL SIGNATURE 7520



Reg: 19223546 • Calved: 04/06/17

Boyd Signature 1014  
Shipwheel Signature 4541  
Shipwheel Black Pride 277

Kesslers Frontman R001 #  
Boyd Erica Dianna 9054  
Connealy Right Answer 746 #  
Shipwheel Black Pride 0146  
Connealy Forefront #  
Six Belles Forever Lady 015  
Shipwheel Chinook #  
D R J Miss Rolls Royce F17 #

CED	8
BW	0
WW	48
YW	82
MILK	26
SC	0.54
CW	25
MB	-.08
RE	.41
FAT	.018

Mytty ForeFront 77P  
Shipwheel Pinetop 360  
Shipwheel Pinetop 059

BW	205 WT	WR	YR	Scrotal	RE
73	658	103	98	37.5	.018
Dam BR	Dam WR	Dam YR	MGD BR	MGD WR	MGD YR
3/91	3/102	2/105	6/101	6/103	5/102

Calving Ease Score: 3      Front Foot Score: 3  
Disposition Score: 5      Hind Foot Score: 4

- Super gentle & long spined.
- Dam is a tidy uddered, small teated, pretty young cow.

### Shipwheel Crew - From the field to the bunk





### SHIPWHEEL PACKER 7585



Reg: 19227158 • Calved: 04/02/17

Feltons Meat Packer 62 #  
Connealy Packer 547 #  
Bestrelle of Conanga 539

Finks 5522-6148 #  
Graham N Mistress 8  
Dalebanks Extender 6012 #  
Besta of Conanga 6538 #  
Sitz Upward 307R #  
Sitz Barabamere Nell 653  
Connealy Danny Boy #  
DR J Miss Apex 053-K59

CED	9
BW	1.6
WW	57
YW	100
MILK	22
SC	0.18
CW	47
MB	-.01
RE	.56
FAT	.065
Dam BR	2/103
Dam WR	2/97
Dam YR	1/97
MGD BR	8/98
MGD WR	8/103
MGD YR	7/102

Sitz Far & Wide 6908  
Shipwheel Eola 478  
DR J Ms Danny Boy M7

BW	205 WT	WR	YR	Scrotal	RE
79	630	99	97	35	.56
Dam BR	Dam WR	Dam YR	MGD BR	MGD WR	MGD YR
2/103	2/97	1/97	8/98	8/103	7/102

Calving Ease Score: 2      Front Foot Score: 3  
Disposition Score: 4.5      Hind Foot Score: 3

- This guy will make some dandy females. Our Packer daughters are excellent.
- Dam is a super gentle, feminine, young cow.



### SHIPWHEEL KEYSTONE 7542



Reg: 19223565 • Calved: 03/28/17

Connealy Capitalist 028 #  
Myers Keystone M263  
Myers Queen M180

S A V Final Answer 0035 #  
Prides Pita of Conanga 8821  
Hoover Dam #  
Myers Proud Queen M363  
S Alliance 3313  
S Gloria 464 #  
Connealy Forefront #  
H C Miss Crissy 501

S Chisum 6175 #  
Shipwheel Crissy 4142  
Apexette Crissy 4425

CED	15
BW	-1.0
WW	56
YW	88
MILK	13
SC	1.78
CW	34
MB	.10
RE	.90
FAT	-.002
Dam BR	2/76
Dam WR	2/101
Dam YR	2/100
MGD BR	10/95
MGD WR	10/98
MGD YR	9/100

BW	205 WT	WR	YR	Scrotal	RE
56	601	94	98	37	.90
Dam BR	Dam WR	Dam YR	MGD BR	MGD WR	MGD YR
2/76	2/101	2/100	10/95	10/98	9/100

Calving Ease Score: 3      Front Foot Score: 4  
Disposition Score: 4      Hind Foot Score: 4.5

- A moderate framed, good looking, calving ease Keystone.
- Dam is a very nice young cow with small teats. She is an embryo daughter of one of our most influential cows.
- Full brother in blood to Lot 64.



### SHIPWHEEL RECHARGE 7501



Reg: +19228766 • Calved: 03/31/17

Rito 707 of Ideal 3407 7075  
S A V Recharge 3436  
S A V Blackcap May 4136

R R Rito 707 #  
Ideal 3407 of 1418 076  
S A V 8180 Traveler 004 #  
S A V May 2397 #  
Connealy Timeline #  
Energy of Conanga 4851  
Apex Focus 053  
DR J Miss Time C102

CED	9
BW	.2
WW	47
YW	87
MILK	25
SC	1.87
CW	30
MB	.21
RE	.49
FAT	-.029
Dam BR	6/94
Dam WR	6/108
Dam YR	5/106
MGD BR	2/96
MGD WR	2/97
MGD YR	2/100

Connealy Danny Boy #  
DR J Ms Danny Boy M64 #  
DR J Miss Apex 053-K118

BW	205 WT	WR	YR	Scrotal	RE
85	613	100	100	39	.49
Dam BR	Dam WR	Dam YR	MGD BR	MGD WR	MGD YR
6/94	6/108	5/106	2/96	2/97	2/100

Calving Ease Score: 2      Front Foot Score: 4.5  
Disposition Score: 4.5      Hind Foot Score: 4

- Moderate & long spined with good muscle & feet.
- Maternal ET brother to Lots 11, 37 & 38.



### SHIPWHEEL ALS KEYSTONE 7540



Reg: 19226464 • Calved: 04/02/17

Connealy Capitalist 028 #  
Myers Keystone M263  
Myers Queen M180

S A V Final Answer 0035 #  
Prides Pita of Conanga 8821  
Hoover Dam #  
Myers Proud Queen M363  
S Chisum 6175 #  
S Blossom 0278 #  
Connealy Thunder #  
Apexette Rachel 0072 #

S Chisum 255  
Shipwheel ALS Rachel 465  
Apexette Rachel 2033

CED	9
BW	.7
WW	67
YW	105
MILK	12
SC	0.4
CW	40
MB	.55
RE	.60
FAT	.008
Dam BR	2/98
Dam WR	2/93
Dam YR	1/98
MGD BR	3/115
MGD WR	3/102
MGD YR	2/107

BW	205 WT	WR	YR	Scrotal	RE
77	628	99	98	36	.60
Dam BR	Dam WR	Dam YR	MGD BR	MGD WR	MGD YR
2/98	2/93	1/98	3/115	3/102	2/107

Calving Ease Score: 2      Front Foot Score: 4  
Disposition Score: 4      Hind Foot Score: 4

- Medium framed Keystone with good length & muscle shape.
- Dam is an easy doing, nice uddered young cow.
- This is Austin's bull.





### SHIPWHEEL KEYSTONE 7522



Reg: 19223564 • Calved: 04/02/17

Connealy Capitalist 028 #  
Myers Keystone M263  
Myers Queen M180

S A V Final Answer 0035 #  
Prides Pita of Conanga 8821  
Hoover Dam #  
Myers Proud Queen M363  
Connealy Consensus #  
Brazila of Conanga 3991 839A  
Shipwheel Chinook #  
D R J Miss Rolls Royce F17 #

CED	13
BW	-.6
WW	65
YW	113
MILK	15
SC	1.36
CW	42
MB	.56

Connealy Earnan 076E #  
Shipwheel Pinetop 4137  
Shipwheel Pinetop 059

BW	205 WT	WR	YR	Scrotal	RE
66	585	92	93	37.5	.57
Dam BR	Dam WR	Dam YR	MGD BR	MGD WR	MGD YR
2/89	2/100	2/95	6/101	6/103	5/102

Calving Ease Score: 3      Front Foot Score: 4.5  
Disposition Score: 4      Hind Foot Score: 4.5

- A moderate framed, long spined, sweet fronted bull with excellent feet & good muscle.
- Dam is an easy fleshing, tidy uddered, pretty young cow backed by a strong cow family.
- We have used this bull for natural service.



### SHIPWHEEL PAYCHECK 7526



Reg: 19227174 • Calved: 04/08/17

Basin Payweight 1682  
Basin Paycheck 5249  
Basin Lucy 3150

Basin Payweight 006S #  
21AR O Lass 7017  
Basin Rainmaker P175 #  
Basin Lucy 1667

CED	5
BW	1.8
WW	53
YW	91
MILK	29
SC	-0.16
CW	38
MB	.74

Apex Long Distance 102  
Shipwheel Pinetop 4119  
Shipwheel Pinetop 878

Mohnen Long Distance 1639  
Apexette Wingina 5002  
H A Image Maker 0415 #  
DR J Miss Apex 630-J111

BW	205 WT	WR	YR	Scrotal	RE
84	619	97	94	34	.13
Dam BR	Dam WR	Dam YR	MGD BR	MGD WR	MGD YR
2/112	2/100	2/98	7/95	7/101	7/104

Calving Ease Score: 2      Front Foot Score: 4  
Disposition Score: 4      Hind Foot Score: 4.5

- A maternally bred, calving ease bull.
- Dam is moderate, gentle & easy doing with an excellent udder.



### SHIPWHEEL KEYSTONE 7535



Reg: 19223557 • Calved: 04/02/17

Connealy Capitalist 028 #  
Myers Keystone M263  
Myers Queen M180

S A V Final Answer 0035 #  
Prides Pita of Conanga 8821  
Hoover Dam #  
Myers Proud Queen M363

CED	3
BW	3.0
WW	69
YW	108
MILK	11
SC	1.78
CW	49
MB	.21

S Chisum 6175 #  
Shipwheel Eriskay 320 #  
Apexette Eriskay 3060

S Alliance 3313  
S Gloria 464 #  
Hyline Right Time 338 #  
Apexette Eriskay 9040 #

BW	205 WT	WR	YR	Scrotal	RE
88	610	96	101	38.5	-.007
Dam BR	Dam WR	Dam YR	MGD BR	MGD WR	MGD YR
2/123	2/108	2/108	8/103	8/102	5/103

Calving Ease Score: 1      Front Foot Score: 4  
Disposition Score: 4.5      Hind Foot Score: 4

- Powerful maternal behind this guy.
- Donor 3rd, 4th, 5th dams & they produced well into their teens.



### SHIPWHEEL KEYSTONE 7562



Reg: 19223559 • Calved: 04/05/17

Connealy Capitalist 028 #  
Myers Keystone M263  
Myers Queen M180

S A V Final Answer 0035 #  
Prides Pita of Conanga 8821  
Hoover Dam #  
Myers Proud Queen M363

CED	8
BW	1.5
WW	71
YW	114
MILK	23
SC	1.81
CW	52
MB	.52

Connealy Earnan 076E #  
Shipwheel Chloe 430  
Shipwheel Chloe 156

Connealy Consensus #  
Brazila of Conanga 3991 839A  
Sitz Far & Wide 6908  
Shipwheel Chloe 800

BW	205 WT	WR	YR	Scrotal	RE
72	575	90	97	40	.018
Dam BR	Dam WR	Dam YR	MGD BR	MGD WR	MGD YR
2/98	2/98	1/97	5/107	5/99	4/102

Calving Ease Score: 2      Front Foot Score: 4  
Disposition Score: 4.5      Hind Foot Score: 4.5

- Impressive numbers across the board on this big nutted bull.
- Dam is a little bigger, young cow that earned a spot on our tour stop with her impressive Shipwheel Resource 5621 bull calf.



### SHIPWHEEL CHISUM 7523



Reg: 19223584 • Calved: 04/17/17

S Chisum 255  
Shipwheel Chisum 5544  
Shipwheel Lady 1116

S Chisum 6175 #  
S Blossom 0278 #  
Sitz Upward 307R #  
DR J Ms Danny Boy M63

CED	8
BW	3.1
WW	70
YW	119
MILK	13
SC	1.19
CW	39
MB	.58

BPF DR J 2110  
Shipwheel Primrose 592  
Shipwheel Primrose 152

Shipwheel Dr J In Focus 9560  
BPF Forever Lady 651  
Connealy Impression #  
Apex Primrose 700

BW	205 WT	WR	YR	Scrotal	RE
68	585	92	98	35	-.009
Dam BR	Dam WR	Dam YR	MGD BR	MGD WR	MGD YR
1/90	1/92	1/98	5/104	5/96	3/103

Calving Ease Score: 1      Front Foot Score: 4  
Disposition Score: 4      Hind Foot Score: 4

- Impressive pedigree & numbers on this balanced cow bull.
- Dam is a gentle, good footed, first calf heifer with a nice udder.



### SHIPWHEEL CHISUM 7553



Reg: 19223577 • Calved: 04/28/17

S Chisum 255  
**Shipwheel Chisum 5530**  
 Shipwheel Eriskay 342

S Chisum 6175 #  
 S Blossom 0278 #  
 Mytty ForeFront 77P  
 Shipwheel Eriskay 821

Shipwheel Montana 2600  
**Shipwheel Eola 533**  
 Shipwheel Eola 396

S Chisum 6175 #  
 Dr J Ms Wide Track 374 M15  
 Sitz Far & Wide 6908  
 DR J Miss Apex I16

<b>CED</b>	<b>7</b>
<b>BW</b>	<b>.9</b>
<b>WW</b>	<b>49</b>
<b>YW</b>	<b>85</b>
<b>MILK</b>	<b>27</b>
<b>SC</b>	<b>1.1</b>
<b>CW</b>	<b>33</b>
<b>MB</b>	<b>.10</b>
<b>RE</b>	<b>.28</b>
<b>FAT</b>	<b>.020</b>
<b>Dam BR</b>	<b>1/93</b>
<b>Dam WR</b>	<b>1/94</b>
<b>Dam YR</b>	<b>1/94</b>
<b>MGD BR</b>	<b>2/109</b>
<b>MGD WR</b>	<b>2/97</b>
<b>MGD YR</b>	<b>2/102</b>

**Calving Ease Score: 2**      **Front Foot Score: 4**  
**Disposition Score: 4.5**      **Hind Foot Score: 4**

- A good all-around, big nutted, calving ease bull.
- Dam is a medium framed, nice uddered first calf heifer that bred back A.I. for her second.



### SHIPWHEEL UNCOMMON 7587



Reg: 19223568 • Calved: 04/25/17

Sitz Uncommon #  
**CCAR Uncommon Z317**  
 CCAR Maiden U923

S Chisum 6175 #  
**Shipwheel Eriskay 265**  
 Shipwheel Eriskay 930

Sitz Upward 307R #  
 Sitz Ellunas Elite 1697  
 Cole Creek Dunn Deal 144R  
 Griffs Maiden P206

S Alliance 3313  
 S Gloria 464 #  
 Connealy Thunder #  
 Apex Eriskay 5506 #

<b>CED</b>	<b>3</b>
<b>BW</b>	<b>1.9</b>
<b>WW</b>	<b>54</b>
<b>YW</b>	<b>94</b>
<b>MILK</b>	<b>18</b>
<b>SC</b>	<b>1.03</b>
<b>CW</b>	<b>52</b>
<b>MB</b>	<b>.19</b>
<b>RE</b>	<b>.30</b>
<b>FAT</b>	<b>.045</b>
<b>Dam BR</b>	<b>4/85</b>
<b>Dam WR</b>	<b>4/95</b>
<b>Dam YR</b>	<b>2/92</b>
<b>MGD BR</b>	<b>4/92</b>
<b>MGD WR</b>	<b>4/98</b>
<b>MGD YR</b>	<b>4/99</b>

**Calving Ease Score: 1**      **Front Foot Score: 4.5**  
**Disposition Score: 4**      **Hind Foot Score: 4.5**

- A good looking, long stride, Uncommon with excellent feet.
- Dam is a pretty cow with an excellent udder.
- 3rd dam is the mother to Shipwheel Chinook & Shipwheel Resource 5621



### SHIPWHEEL REGIONS 7516



Reg: 19227179 • Calved: 03/24/17

Koupal Advance 28  
**LT Regions 4110**  
 LT Beauty 8398

Koupal Juneau 797 #  
 Koupal Ebonette 734  
 SydGen Contact #  
 L T Bando Beauty 9135

BPF 752 Freestyle 0111  
**Shipwheel Enchantress 5140**  
 Dr J Ms Apex 053 L35

BPF Freestyle 752  
 Miss Wix 6140 of BPF #  
 Apex Focus 053  
 DR J Miss 34 Time D54

<b>CED</b>	<b>11</b>
<b>BW</b>	<b>-.5</b>
<b>WW</b>	<b>42</b>
<b>YW</b>	<b>70</b>
<b>MILK</b>	<b>28</b>
<b>SC</b>	<b>0.67</b>
<b>CW</b>	<b>32</b>
<b>MB</b>	<b>.47</b>
<b>RE</b>	<b>.30</b>
<b>FAT</b>	<b>.031</b>
<b>Dam BR</b>	<b>1/94</b>
<b>Dam WR</b>	<b>1/100</b>
<b>Dam YR</b>	<b>1/96</b>
<b>MGD BR</b>	<b>8/95</b>
<b>MGD WR</b>	<b>8/100</b>
<b>MGD YR</b>	<b>6/101</b>

**Calving Ease Score: 3**      **Front Foot Score: 4**  
**Disposition Score: 4.5**      **Hind Foot Score: 4**

- Loads of maternal bred into this calving ease bull.
- Dam is a super gentle, tidy uddered, small teated first calf heifer that bred back A.I. for her second.



### SHIPWHEEL UNCOMMON 7610



Reg: 19223569 • Calved: 05/01/17

Sitz Uncommon #  
**CCAR Uncommon Z317**  
 CCAR Maiden U923

S Chisum 6175 #  
**Shipwheel Chloe 331**  
 Apexette Chloe 2050

Sitz Upward 307R #  
 Sitz Ellunas Elite 1697  
 Cole Creek Dunn Deal 144R  
 Griffs Maiden P206

S Alliance 3313  
 S Gloria 464 #  
 Apex Profiler 630  
 Apexette Chloe 9002 #

<b>CED</b>	<b>5</b>
<b>BW</b>	<b>1.4</b>
<b>WW</b>	<b>43</b>
<b>YW</b>	<b>70</b>
<b>MILK</b>	<b>20</b>
<b>SC</b>	<b>1.72</b>
<b>CW</b>	<b>27</b>
<b>MB</b>	<b>.36</b>
<b>RE</b>	<b>.06</b>
<b>FAT</b>	<b>.052</b>
<b>Dam BR</b>	<b>3/95</b>
<b>Dam WR</b>	<b>3/95</b>
<b>Dam YR</b>	<b>2/92</b>
<b>MGD BR</b>	<b>12/109</b>
<b>MGD WR</b>	<b>12/97</b>
<b>MGD YR</b>	<b>8/103</b>

**Calving Ease Score: 2**      **Front Foot Score: 4.5**  
**Disposition Score: 3.5**      **Hind Foot Score: 4.5**

- A moderate, long spined, excellent footed bull.
- Dam is an easy fleshing, long bodied young cow backed by a powerful cow family.





### SHIPWHEEL STRATEGY 7515



Reg: 19223570 • Calved: 04/29/17

S A V Resource 1441 #  
**Pyramid Strategy 4086**  
 Glacial 20N BlackbirdEve 29R

S Chisum 6175 #  
**Shipwheel Eriskay 332**  
 Apexette Eriskay 3060

Rito 707 of Ideal 3407 7075  
 S A V Blackcap May 4136  
 Glacial 7078 VRD 20N  
 Glacial Blackbird Eve 33M

S Alliance 3313  
 S Gloria 464 #  
 Hyline Right Time 338 #  
 Apexette Eriskay 9040 #

CED	2
BW	1.6
WW	54
YW	94
MILK	18
SC	-0.04
CW	42
MB	.18

BW	205 WT	WR	YR	Scrotal	RE
89	504	100	100	36	.67
Dam BR	Dam WR	Dam YR	MGD BR	MGD WR	MGD YR
3/103	3/95	2/95	8/103	8/102	5/103

Calving Ease Score: 1      Front Foot Score: 4.5  
 Disposition Score: 4      Hind Foot Score: 4.5

- An excellent footed, muscled up Strategy that was orphaned for most of the summer. He was ratioed as his own contemporary.
- Dam died when she over centered on her back. She was one of our very best Chisum daughters with A ratings across the board.



### SHIPWHEEL CHISUM 7670



Reg: 19223604 • Calved: 05/20/17

S Chisum 6175 #  
**S Chisum 255**  
 S Blossom 0278 #

Sitz Rainmaker 6536  
**Shipwheel Chloe 970**  
 Apexette Chloe 2050

S Alliance 3313  
 S Gloria 464 #  
 Shipwheel Chinook #  
 S Blossom 8378 #

Sitz Rainmaker 6169 #  
 Sitz Elsiemere 331 #  
 Apex Profiler 630  
 Apexette Chloe 9002 #

CED	3
BW	3.2
WW	43
YW	69
MILK	21
SC	1.09
CW	25
MB	.12

BW	205 WT	WR	YR	Scrotal	RE
88	667	103	98	40	.44
Dam BR	Dam WR	Dam YR	MGD BR	MGD WR	MGD YR
7/106	7/106	7/107	12/109	12/97	8/103

Calving Ease Score: 1      Front Foot Score: 4.5  
 Disposition Score: 3.5      Hind Foot Score: 4.5

- Keep all the daughters out of this excellent footed 255 son.
- Dam is an excellent uddered, easy fleshing, top producer from Powerful cows that trace back to the mother of Apex Transform 013.



### SHIPWHEEL REGIONS 7625



Reg: 19227178 • Calved: 03/19/17

Koupal Advance 28  
**LT Regions 4110**  
 LT Beauty 8398

S Chisum 255  
**Shipwheel Verona 5106**  
 Shipwheel Verona 221 #

Koupal Juneau 797 #  
 Koupal Ebonette 734  
 SydGen Contact #  
 L T Bando Beauty 9135

S Chisum 6175 #  
 S Blossom 0278 #  
 Sitz Far & Wide 6908  
 DR J Miss ND 878-J88 #

CED	12
BW	-2.5
WW	51
YW	81
MILK	35
SC	1.02
CW	25
MB	.19

BW	205 WT	WR	YR	Scrotal	RE
62	697	109	94	37	.47
Dam BR	Dam WR	Dam YR	MGD BR	MGD WR	MGD YR
1/83	1/109	1/94	4/95	4/106	4/103

Calving Ease Score: 3      Front Foot Score: 4  
 Disposition Score: 4      Hind Foot Score: 3

- A good, maternally bred, calving ease bull.
- Dam is a smaller framed first calf heifer that did a fine job and bred back A.I.



### SHIPWHEEL KEYSTONE 7641



Reg: 19223600 • Calved: 05/21/17

Connealy Capitalist 028 #  
**Myers Keystone M263**  
 Myers Queen M180

RA Trinity T95  
**Shipwheel Pinetop 867**  
 Dr J Ms Apex 053 L15

S A V Final Answer 0035 #  
 Prides Pita of Conanga 8821  
 Hoover Dam #  
 Myers Proud Queen M363

Ra Klondike K14  
 R A Wendy F12 #  
 Apex Focus 053  
 DR J Miss Guru I6

CED	12
BW	.3
WW	66
YW	119
MILK	15
SC	1.7
CW	47
MB	.53

BW	205 WT	WR	YR	Scrotal	RE
90	646	100	104	40	.63
Dam BR	Dam WR	Dam YR	MGD BR	MGD WR	MGD YR
7/102	7/100	7/103	1/104	1/119	1/121

Calving Ease Score: 2      Front Foot Score: 4  
 Disposition Score: 4      Hind Foot Score: 4

- Impressive stats on this big nutted, complete Keystone.
- Dam is a consistent producing, ideal cow with an excellent udder.



### SHIPWHEEL SIGNATURE 7576



Reg: 19223571 • Calved: 04/02/17

Boyd Signature 1014  
**Shipwheel Signature 4541**  
 Shipwheel Black Pride 277

Sitz Far & Wide 6908  
**Shipwheel Chloe 339**  
 Apex Chloe 648

Kesslers Frontman R001 #  
 Boyd Erica Dianna 9054  
 Connealy Right Answer 746 #  
 Shipwheel Black Pride 0146

Sitz Upward 307R #  
 Sitz Barbaramere Nell 653  
 Mytty In Focus #  
 Apexette Chloe 4099 #

CED	4
BW	1.5
WW	47
YW	89
MILK	26
SC	-0.3
CW	36
MB	-.04

BW	205 WT	WR	YR	Scrotal	RE
85	611	96	96	35.5	.80
Dam BR	Dam WR	Dam YR	MGD BR	MGD WR	MGD YR
3/105	3/96	2/101	5/97	5/93	3/98

Calving Ease Score: 1      Front Foot Score: 4  
 Disposition Score: 4      Hind Foot Score: 4

- A good, solid, Signature cow bull.
- Dam is easy fleshing, gentle & small teated.







### SHIPWHEEL KEYSTONE 7651



Reg: 19223599 • Calved: 05/01/17

Connealy Capitalist 028 #  
**Myers Keystone M263**  
 Myers Queen M180

S A V Final Answer 0035 #  
 Prides Pita of Conanga 8821  
 Hoover Dam #  
 Myers Proud Queen M363

Sitz Tradition 8135 #  
**Shipwheel Eriskay 818**  
 Apexette Eriskay 9040 #

Sitz Tradition RLS 8702 #  
 Sitz Pride 132  
 TC Advantage #  
 Eriskay of Apex 9004

CED	10
BW	.1
WW	46
YW	82
MILK	23
SC	1.62
CW	25
MB	.57
RE	.38
FAT	.021

BW	205 WT	WR	YR	Scrotal	RE
84	602	93	96	39	
Dam BR	Dam WR	Dam YR	MGD BR	MGD WR	MGD YR
8/105	8/108	7/107	12/93	12/101	10/99

Calving Ease Score: 2      Front Foot Score: 4  
 Disposition Score: 4      Hind Foot Score: 4

- Cow power behind this guy.
- Dam is a little bigger, long fronted, nice uddered, gentle cow.
- Donor 2nd & 3rd dams produced well into their teens.



### SHIPWHEEL SIGNATURE 7675



Reg: 19223596 • Calved: 04/05/17

Boyd Signature 1014  
**Shipwheel Signature 4541**  
 Shipwheel Black Pride 277

Kesslers Frontman R001 #  
 Boyd Erica Dianna 9054  
 Connealy Right Answer 746 #  
 Shipwheel Black Pride 0146

S A V Iron Mountain 8066 #  
**Shipwheel Verona 226**  
 Shipwheel Verona 883

TC Gridiron 258 #  
 S A V Madame Pride 3249  
 Apex Focus 053  
 Dr J Ms Conn L99

CED	3
BW	.6
WW	45
YW	88
MILK	20
SC	-0.65
CW	21
MB	.37
RE	.57
FAT	.001

BW	205 WT	WR	YR	Scrotal	RE
86	603	93	95	36	
Dam BR	Dam WR	Dam YR	MGD BR	MGD WR	MGD YR
4/96	4/95	3/96	7/98	7/102	6/100

Calving Ease Score: 1      Front Foot Score: 4  
 Disposition Score: 3      Hind Foot Score: 4

- A soft made signature with good muscle.
- Dam is an easy fleshing, attractive cow with a nice udder.



### SHIPWHEEL DR J 7636



Reg: 19223605 • Calved: 06/10/17

Shipwheel Dr J In Focus 9560  
**BPF DR J 2110**  
 BPF Forever Lady 651

Dr J Apex Focus 053-M89  
 Apexette Crissy 4425  
 B/R New Frontier 095 #  
 Gdar SVF Forever Lady 226D

Kesslers Frontman R001 #  
**Shipwheel Enchantress 1102**  
 Shipwheel Enchantress 987

Connealy Front Page 0228 #  
 Kesslers Bell 0024  
 Apex Focus 053  
 DR J Miss ND 878-J35

CED	11
BW	1.3
WW	53
YW	77
MILK	19
SC	2.26
CW	24
MB	.45
RE	.34
FAT	.030

BW	205 WT	WR	YR	Scrotal	RE
90	645	104	98	39.5	
Dam BR	Dam WR	Dam YR	MGD BR	MGD WR	MGD YR
5/99	5/103	4/103	3/104	3/104	2/103

Calving Ease Score: 1      Front Foot Score: 3  
 Disposition Score: 4      Hind Foot Score: 4

- A functional calving ease Dr. J. A full brother sold to Jeri VandenBos, MT in 2016.
- Dam has been an awesome producer.



### SHIPWHEEL SIGNATURE 7673



Reg: 19223593 • Calved: 05/02/17

Boyd Signature 1014  
**Shipwheel Signature 4541**  
 Shipwheel Black Pride 277

Kesslers Frontman R001 #  
 Boyd Erica Dianna 9054  
 Connealy Right Answer 746 #  
 Shipwheel Black Pride 0146

Connealy Impression #  
**Shipwheel Graham 145**  
 Apex Graham 5524

Connealy Reflection #  
 Pearl Pammy of Conanga 194  
 B/R New Frontier 095 #  
 Apexette Graham 1004

CED	11
BW	-.4
WW	45
YW	83
MILK	24
SC	0.73
CW	33
MB	.65
RE	.62
FAT	-.012

BW	205 WT	WR	YR	Scrotal	RE
80	605	94	97	38.5	
Dam BR	Dam WR	Dam YR	MGD BR	MGD WR	MGD YR
5/99	5/96	4/99	6/109	6/97	4/103

Calving Ease Score: 2      Front Foot Score: 4  
 Disposition Score: 4      Hind Foot Score: 4.5

- A nice pedigree behind this solid Signature.
- Dam is an excellent uddered, free moving cow.



### SHIPWHEEL PACKER 7660



Reg: 19227180 • Calved: 05/05/17

Feltons Meat Packer 62 #  
**Connealy Packer 547 #**  
 Bestrelle of Conanga 539

Finks 5522-6148 #  
 Graham N Mistress 8  
 Dalebanks Extender 6012 #  
 Besta of Conanga 6538 #

Shipwheel Far & Wide 1558  
**Shipwheel Lady 312**  
 Shipwheel Lady 192

Sitz Far & Wide 6908  
 DR J Ms Apex Focus 053 M85  
 PGC Alliance 187- 9045  
 Shipwheel Lady 967

CED	1
BW	3.5
WW	42
YW	79
MILK	21
SC	2.09
CW	27
MB	.40
RE	.35
FAT	.027

BW	205 WT	WR	YR	Scrotal	RE
95	577	89	96	42	
Dam BR	Dam WR	Dam YR	MGD BR	MGD WR	MGD YR
3/106	3/99	2/102	2/102	2/103	1/102

Calving Ease Score: 1      Front Foot Score: 4  
 Disposition Score: 4      Hind Foot Score: 4

- A big nutted Packer that will make productive females.
- Dam is a moderate, very gentle, young cow with a nice udder.

# BRED HEIFERS AND BRED COWS

## Baltrusch Angus Ranch

### 20 A.I. Bred Heifers

Nathan Baltrusch is an up and coming angus breeder from Havre, MT. The breeding behind 11 of these heifers is heavily influenced by 15 bred heifers and a bull that Nathan purchased from Shipwheel in 2011. The bull was Shipwheel Upward 0560, a direct son of Apex Eriskay 5506. 5506 is the dam of Shipwheel Chinook and Shipwheel Resource 5621. Nathan purchased the other 9 heifers from Bradley's from Cut Bank, MT. Bradley's run an excellent cowherd. They have been buying out of the top end of our bulls for decades. One of the top bulls was Apex Travel Trend 904 from 1994. 904's dam is our foundation 9004 cow who is the grand dam to 5506. These heifers are due to calve March 1 to Shipwheel Motive 6509, a top selling calving ease bull from our 2017 sale. They are bangs vaccinated, have had PregGaurd GOLD FP 10, Vira Shield 6 + VL5, LongRange and Clean-Up II pour on. Ultrasound pregnancy tested with a calf sex. Approximately 950lbs.

\$ \_\_\_\_\_ HD: \_\_\_\_\_ BUYER: \_\_\_\_\_  
\$ \_\_\_\_\_ HD: \_\_\_\_\_ BUYER: \_\_\_\_\_  
\$ \_\_\_\_\_ HD: \_\_\_\_\_ BUYER: \_\_\_\_\_  
\$ \_\_\_\_\_ HD: \_\_\_\_\_ BUYER: \_\_\_\_\_

## Curry Cattle Company

### 35 A.I. Bred Heifers

This fancy set of bred heifers come from Curry Cattle Company, in Valier, MT. The Curry family runs one of the premier herds of commercial black angus in Montana. They have been purchasing top end bulls from our family for decades. These heifers are due to calve March 1 to the maternal brothers, Shipwheel Chinook 7700 and Shipwheel Resource 5621. They are bangs vaccinated with one round of Guardian, PregGaurd GOLD FP 10, and Clean-Up II. Ultrasound pregnancy tested. Approximately 1050 lbs.

\$ \_\_\_\_\_ HD: \_\_\_\_\_ BUYER: \_\_\_\_\_  
\$ \_\_\_\_\_ HD: \_\_\_\_\_ BUYER: \_\_\_\_\_  
\$ \_\_\_\_\_ HD: \_\_\_\_\_ BUYER: \_\_\_\_\_  
\$ \_\_\_\_\_ HD: \_\_\_\_\_ BUYER: \_\_\_\_\_

## Curry Cattle Company

### 40 Natural Bred Heifers

A fancy set of naturally bred heifers to top end calving ease bulls. Same protocol as the A.I. heifers. They are due to calve from March 15 to April 7th.

\$ \_\_\_\_\_ HD: \_\_\_\_\_ BUYER: \_\_\_\_\_  
\$ \_\_\_\_\_ HD: \_\_\_\_\_ BUYER: \_\_\_\_\_  
\$ \_\_\_\_\_ HD: \_\_\_\_\_ BUYER: \_\_\_\_\_  
\$ \_\_\_\_\_ HD: \_\_\_\_\_ BUYER: \_\_\_\_\_

## Shipwheel Cattle Company

### 25 Natural Bred Heifers

This is a top end of our naturally bred heifers. Most are bred to the very best calving ease bulls selling in this sale. They are due to start calving April 20 to May 10. They are bangs vaccinated with one round of PregGaurd GOLD FP 10, Scourgaurd 4KC and Dectomax. Ultrasound pregnancy tested.

\$ \_\_\_\_\_ HD: \_\_\_\_\_ BUYER: \_\_\_\_\_  
\$ \_\_\_\_\_ HD: \_\_\_\_\_ BUYER: \_\_\_\_\_  
\$ \_\_\_\_\_ HD: \_\_\_\_\_ BUYER: \_\_\_\_\_  
\$ \_\_\_\_\_ HD: \_\_\_\_\_ BUYER: \_\_\_\_\_

## Shipwheel Cattle Company

### 30- 2008 model Cows

Each year, we disperse all of our 10-year-old cows with the exception of a registered donor cow or two. It is hard for us to let these girls go since they have stood the test of time with us. Several of them have many more years left in them. Our program is based upon breeding longevity into our cowherd. Many of our donor cows are in their teens. They have had PregGaurd GOLD FP 10 and Dectomax. They are naturally bred to top end Shipwheel bulls due to start calving March 25th. They have been ultrasound pregnancy tested for calf age.

\$ \_\_\_\_\_ HD: \_\_\_\_\_ BUYER: \_\_\_\_\_  
\$ \_\_\_\_\_ HD: \_\_\_\_\_ BUYER: \_\_\_\_\_  
\$ \_\_\_\_\_ HD: \_\_\_\_\_ BUYER: \_\_\_\_\_  
\$ \_\_\_\_\_ HD: \_\_\_\_\_ BUYER: \_\_\_\_\_

# STOCKMENS INSURANCE AGENCY LLC



Bill Pelton

Telephone: 1-406-671-5100

Email: bill@billpelton.com

THE FOLLOWING RATES ARE EFFECTIVE: MARCH 1, 2018 for NEW and APRIL 1, 2018 for RENEWALS:

## ALL RISK MORTALITY – BEEF CATTLE

**CATTLE** - Age Limits - 90 days to 5 years on Bulls for Accident, A.S. & D or Comprehensive Infertility  
- 90 days to 6 years on Bulls for All Risk Mortality Only  
- 90 days to 8 years on Females

- Maximum Value per animal is \$25,000.00.

- Coverage for higher limits, older and younger animals is available subject to approval.

12 Month Term – **All Risk Mortality** FEMALES - **5.0%** excluding calving  
- **6.0%** including calving

BULLS - **6.0%**

12 Month Term – **All Risk Mortality** - Including **Accident Only Infertility** - **10.0%**  
- Including **Accident, Sickness & Disease Infertility** - **12.5%**  
- Including **Comprehensive Infertility** - **16.0%**  
(Above two options require a satisfactory semen evaluation completed not more than 30 days prior to policy inception.)

## SHORT TERM

6 Month Term - **All Risk Mortality with Accident Only Infertility** - **8.0%**  
Premium is fully earned.

- **All Risk Mortality Accident, Sickness & Disease Infertility** - **9.35%**  
Premium is fully earned.

(requires a satisfactory semen evaluation completed not more than 30 days prior to policy inception.)

- **All Risk Mortality** only. (Excluding calving)

- 15 day term - **1.0%**

- 30 day term - **1.5%**

- 60 day term - **2.0%**

## HERD PLAN

- Contact Stockmens Insurance for herd plan rates and details.

## MINIMUM PREMIUMS

- Short term policies - \$100.00

- Annual and 6 month policies - \$150.00

CONTACT US FOR RATES ON OTHER LIVESTOCK COVERAGE & IMPORT/EXPORT RATES

## SHIPWHEEL CATTLE COMPANY CARRIED LIVE ON THE INTERNET

[www.cattleusa.com](http://www.cattleusa.com)

### ATTENTION ALL INTERNET & PHONE BUYERS

All Internet and phone buyers must be pre-registered with Northern Livestock Video Auction and have a buyer number to bid on the phone.

To register with NLVA call 866-616-5035 BEFORE SALE DAY.

View the online CATALOG and VIDEO CLIP of each BULL selling at [billpelton.com](http://billpelton.com) and [www.shipwheelcattle.com](http://www.shipwheelcattle.com).

Bidders who are successful in making purchases will be contacted following the sale to make payment and delivery arrangements.

## SHIPWHEEL CATTLE COMPANY BULL SALE CATTLEUSA.com LIVE CATTLE AUCTIONS

1. Go to [www.CattleUSA.com](http://www.CattleUSA.com).
2. First time users must register as a viewer.
3. In the 'Live Auctions' tab select **SHIPWHEEL CATTLE COMPANY BULL SALE** to register as a buyer (only if you wish to buy) and click the 'Submit' button.
4. Fill out the required contact and banking information then click the 'Proceed' button.
5. After you have been approved as a buyer you will receive a confirmation email. On sale day, log in and click the green 'View' button for our sale. You will have the bid console available to place your online bids. Click the 'Bid Now' button to place a bid.
6. The bid received by the auctioneer will be the amount showing in the 'Price' box in the bid console.

High speed internet required for viewing & bidding. Questions call 307-684-0789

# 44th Annual Montana Angus Tour September 18-20, 2018

2018 was the North Central District's turn to host the 44th Annual Montana Angus Tour. Our stop was the last stop on the second night where we served 400 people Certified Angus Pitchfork Fondue Steaks. We were honored to have visitors from 17 states and 2 Canadian provinces. A great time was had by all and it brought on a much needed, beautiful rain.



# WHY WE TEST WITH HD50K FROM ZOETIS



Powered by HD50K from Zoetis, our cattle sell with genomic-enhanced expected progeny differences (GE-EPDs).

With GE-EPDs, we're confident that customers like you can minimize risk in their investment — and enhance the productivity of your cattle.

The benefits of buying HD50K and i50K-tested bulls and heifers goes beyond added accuracy for the complete range of traits for more productive daughters and progeny. You'll know early on what that animal is likely to transmit to its offspring and potential for performance in the feedlot and on the rail. You can also match the HD50K tested sires you buy from us to calves and replacement heifers — through GeneMax® Advantage™ and GeneMax® Focus™— to make better breeding and management decisions down the road.

Knowing an animal's potential. Continuous progress of your herd. That's why we test with HD50K.

Number of progeny records in conventional genetic evaluation needed to achieve the same accuracy as GE-EPDs for non-parents with HD50K and i50K™ in the Angus Single-Step genetic evaluation

Trait	Progeny Equivalents
Heifer Pregnancy (HP)	14
Calving Ease Direct (CED)	28
Birth Weight (BW)	21
Milk	33
Docility (Doc)	10
Scrotal Circumference (SC)	13
Weaning Weight (WW)	26
Yearling Weight (YW)	21
Dry Matter Intake (DMI)	8
Yearling Height (YH)	8
Mature Weight (MW)	11
Carcass Weight (CW)	9
Marbling (Marb)	9
Ribeye Area (RE)	12
Fat Thickness (Fat)	10

For more information: Contact your Zoetis representative  
 Call Zoetis customer service at 877-233-3362  
 Email Zoetis at [genetics.us@zoetis.com](mailto:genetics.us@zoetis.com)  
 Visit us online at <https://www.zoetisus.com/animal-genetics/beef/hd-50k/>

All trademarks are the property of Zoetis Services LLC or a related company or a licensor unless otherwise noted.  
 © 2017 Zoetis Services LLC. All rights reserved. 50K-00020





866.601.6646  
agribestfeeds.com

# MAXIMIZE YOUR GENETIC POTENTIAL



“Having access to the products that have all of these benefits is very exciting in today's world of agriculture. At this point, I'm very comfortable recommending the SweetPro and Redmond salt combination. **It sure has done the job for us.**”

Klint Swanson | Shipwheel Cattle Company | Chinook, MT



**SweetPro**  
PREMIUM FEED SUPPLEMENTS



NO  
MOLASSES  
OR UREA

FLAX  
& MOS  
STANDARD



- UNPROCESSED SEA SALT
- 60+ TRACE MINERALS

We're Social!



# UP & COMING Shipwheel Herd Sire

Shipwheel Resource 5621



Reg: 18400729 • Calved: 04/27/15

CED	7
BW	1.9
WW	62
YW	114
MILK	17
SC	.99
CW	49
MB	.13
RE	.54
FAT	.003

•5621 was the \$25,000 high selling bull in our 2016 sale to Griffin Land & Cattle, MT. He is super sound, moderate framed and thick made. His pathfinder donor dam is also known as the mother to the Spickler and ABS sire, Shipwheel Chinook. The Eriskay cow family is our foundation. They are known for perfect udders, moderate frames and producing well into their teens. 5621 was used heavily in our program on both heifers and cows with great success. Several of his calves were highlights on our MT Angus Tour stop. Some will be features in our 2019 sale. **Semen available.**

- Rito 707 of Ideal 3407 7075
- S A V Resource 1441**
- S A V Blackcap May 4136
- Mytty In Focus #
- Apex Eriskay 5506 #**
- Apexette Eriskay 3032
- R R Rito 707 #
- Ideal 3407 of 1418 076
- S A V 8180 Traveler 004 #
- S A V May 2397 #
- S A F Focus of E R #
- Mytty Countess 906
- Vermilion Dateline 7078 #
- Eriskay of Apex 9004





**Shipwheel Cattle Co.**  
Klint & Lori Swanson  
2265 Gooseberry Lane  
Chinook, Montana 59523

RETURN SERVICE REQUESTED

